

# Annual Report 2022

Department of Geography and Regional Research



## **Imprint**

### **Editor**

Department of Geography  
and Regional Research  
University of Vienna

### **Address**

Universitaetsstrasse 7  
A-1010 Vienna  
Austria

[geographie.univie.ac.at](http://geographie.univie.ac.at)

## Content

Preface Dean .....	2
Preface Head & Deputy Heads of Department .....	3
<b>The Department.....</b>	<b>4</b>
About the Department .....	4
Organization Chart .....	4
Sustainability Strategy .....	5
People .....	6
Staff Changes .....	7
<b>Working Groups .....</b>	<b>9</b>
Cartography and Geoinformation .....	9
Digital Geography .....	10
Geocology .....	11
Human Geography I Economic Geography .....	12
Physical Geography .....	13
Population Geography and Demography .....	14
Spatial Research and Spatial Planning .....	15
Subject Didactics of Geography and Economic Education .....	16
Urban Studies .....	17
<b>Teaching .....</b>	<b>18</b>
Facts and Figures .....	18
Students' Representatives .....	19
<b>Supervision of PhD Students.....</b>	<b>20</b>
PhD Students at the Department.....	20
Completed Dissertations.....	21
Ongoing Dissertations.....	21
<b>Research Projects .....</b>	<b>24</b>
<b>Publications .....</b>	<b>27</b>
Articles in International Peer-Reviewed Journals.....	27
Books .....	30
Book Chapters .....	30
Working Papers   Conference Papers   Other Contributions.....	33
<b>Citations .....</b>	<b>34</b>
<b>Awards .....</b>	<b>35</b>
<b>Guest Researchers .....</b>	<b>36</b>
<b>External Lecturers .....</b>	<b>38</b>

## Dear readers,

After two years of pandemic, 2022 looked promising to lead back to normal, but the decline of infection numbers was counterbalanced by new threats, namely the war almost next door and the associated problems regarding energy supply and inflation. At the university level, we had to cope with a freeze on advertising open positions and with increasing prices at fixed budget. Moreover, we had to bear with a marked cooling trend in our offices. Indeed, last year was demanding, and there was hardly any moment to lean back and take a breath.

Despite these adverse circumstances, the Faculty of Earth Science, Geography and Astronomy continued to fulfil its mission at its best. Indeed, we found back to teaching on site and to meeting and communicating in-person again. The Department of Geography and Regional Research contributed a great share by organizing the Applied Sciences & Spring Interdisciplinary networking event and officially opening two Core Facilities, Long term Wetland Ecosystem Research (LTWER) and Earth Surface Dynamics Lab (eSurfLab). With regard to third-party funding, 2022 again was a great success, and the Department of Geography and Regional Research has made an important contribution. We are facing unprecedented challenges arising from the war in Europe, from global warming and from limited resources. Our faculty and the Department of Geography and Regional Research as its integral part are in the best position to stimulate an informed discussion on the grand societal challenges and to contribute to future development to the benefit of society.



**Rainer ABART**  
*Dean*

A handwritten signature in blue ink, appearing to read 'Rainer Abart', written in a cursive style.

Rainer Abart

## Dear readers,

Over the course of the past year, the COVID-19 pandemic loosened its grip and the Department of Geography and Regional Research was able to resume most of its activities in presence. Nevertheless, this does not mean that we are going back to “business as before COVID-19”. Home office has become an accepted way to work and is probably here to stay. Many meetings will continue to be carried out remotely, or hybrid, and conferences in hybrid mode are now common. We are grateful to our staff for the continued dedication in difficult times and the successful transition to a post-COVID way of working.

In 2022, the renewal of our Department continued: We welcome Professor Krzysztof Janowicz as the new head of the Cartography and Geographic Information Working Group. Furthermore, the new Core Facility „Earth Surface Dynamics Lab (eSurfLab)” was established. This Core Facility implements long-term monitoring systems to examine slope dynamics and its underlying controls to achieve an improved understanding of the spatio-temporal dynamics of landslides in Lower Austria. Over the year, the Department continuously worked on its sustainability strategy. In four working groups, our staff addresses operations, teaching, research and outreach.

The annual report 2022 is a showcase of a growing and increasingly international Department, working, teaching and engaging on issues that are essential for our societies. Many thanks go to all who have substantially contributed to the achievements throughout the last year. We hope you are going to enjoy reading.



**Kerstin  
KRELLENBERG**  
*Head*



**Stephan  
GLATZEL**  
*Deputy Head*

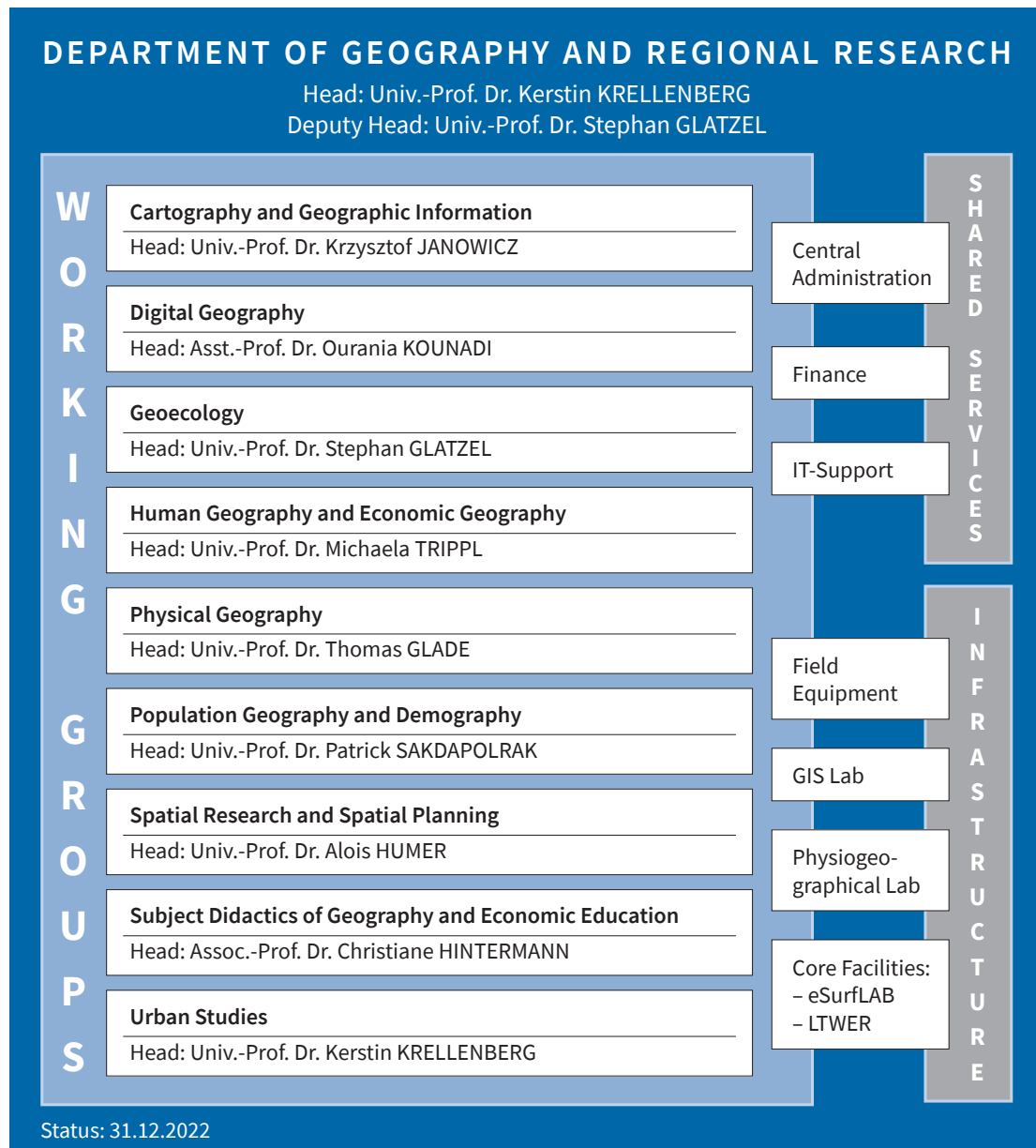
Kerstin Krellenberg

Stephan Glatzel

## Department of Geography and Regional Research

What makes us different!

Founded in 1885 the Department of Geography and Regional Research (IfGR) is the oldest and largest geography department in Austria. It is home to more than 90 researchers in 9 working groups and 3,600 students. Since its foundation, it has not only grown dynamically but also continuously broadened its focus. From the beginning, it has accommodated both human and physical geography. This interdisciplinary basis in social and natural sciences provides a dynamic and inspiring environment for researchers to address the grand societal challenges of our time.



## Sustainability Strategy of the Department for Geography and Regional Research

The University of Vienna aims to contribute with its wide range of disciplines and expertise in different fields to the grand societal challenges in the areas of research, teaching and studies. Societal challenges such as climate change, the biodiversity crisis and increasing socio-economic disparities are also an important concern for the Department of Geography and Regional Research. The Department is aware of its social responsibility to address these challenges and at the same time to point out possible solutions, and therefore aims to position itself with its own sustainability strategy. This considers Geography as an important bridging discipline between natural and social sciences.

Four Working Groups on Operations, Research, Teaching and Outreach have been formed, in which representatives of the professorial staff, post-doctoral students, doctoral students, the general university staff as well as students, jointly drive forward the development of the department's sustainability strategy.

The Operations Working Group addresses the issues of planning and projects. The Research Working Group has defined three areas of activity on which to focus: Research on sustainability, Sustainability of the department's research processes and Research output. Three key fields were developed for the area of Teaching: 1. Integration of transformative education in the context of sustainability, 2. Consideration of the different dimensions of sustainability in curricula and courses, and 3. Resource- and energy-saving planning and implementation of courses. The Outreach Working Group conceptualizes and implements approaches for a more visible science communication in relation to the Department's sustainability activities.

It is now time to define clear goals for our sustainability strategy, short-term, medium-term and long-term ones, and to work on communication channels. Different workshops will be organised in order to develop jointly with all members of the department, including our students, concrete activities for the future.

We are convinced that our societally relevant research and our teaching topics and methods contribute towards more sustainable societies.



## People

People in 2022  
in alphabetical  
order

### Professors

Thomas GLADE  
Stephan GLATZEL  
Alois HUMER  
Krzysztof JANOWICZ  
Kerstin KRELLENBERG  
Patrick SAKDAPOLRAK  
Michaela TRIPPL

### Assistant Professors (Tenure Track)

Ourania KOUNADI

### Associate Professors

Martin HEINTEL  
Christiane HINTERMANN  
Norbert WEIXLBAUMER

### Assistant Professors

Elisabeth AUFHAUSER  
Gerhard HATZ  
Franz HOLAWÉ  
Karel KRIZ  
Robert PETICZKA  
Andreas RIEDL

### Senior Scientists

Maximilian BENNER  
Marion BORDERON  
Andreas MAIER  
Philipp MARR  
Harald STERLY

### Senior Lecturers

Heidrun EDLINGER  
Gudrun HAINDLMAIER  
Ronald PÖPPL

### BL im Hochschuldienst

Herbert PICHLER

### Post-Docs

Ayansina AYANLADE  
Simon BAUMGARTINGER-SEIRINGER  
Kyle BOODOO  
Simon BUNCHUAY-PETH

Camila Aguetoni CAMBUI  
Erika FAIGEN  
Sebastian FASTENRATH  
Yvonne FRANZ  
Peter GÖRGL  
Elisabeth GRUBER  
Nasreen JEELANI  
Sabine KRAUSHAAR  
Balázs PÁGER  
Gunnar STANGE  
Janek WALK

### Prae-Docs | PhD Students

Pamela BAUR  
Edoardo CARRARO  
Yujing DENG  
Rachael DINIEGA  
Stefan HASELBERGER  
Coline GARCIA  
Alessio GIUSTOLISI  
Benedik HAJEK  
Qilei HUANG  
Yenny Alejandra JIMENEZ DONATO  
Jiannis KAUCIC  
Nele KRESS  
Christine KROISLEITNER  
Leonard Kwhang-Gil LEMKE  
Pedro Henrique Muniz LIMA  
Zilong LIU  
Raphael MÜLLER  
Raffaella PAGOGNA  
John Edward PEREZ  
Constantin Eduardo PÖLL  
Daniel RATHOFER  
William RIES  
Martina SCHORN  
Meilin SHI  
Francisca SOTO BRAVO  
Reena TADEE  
Mongkon THONCHATHANAWUT  
James VANDENBERG  
Lemlem F. WELDEMARIAM

### Project Assistants

Alexander BARNSTEINER  
Markus BREIER

Veronika DESCH  
Florian KORN  
Rojo Anahi MONTALVO  
Jonas MACHOLD  
Simon MERSCHROTH  
Benedikt MÜLLER  
Daniel NELL  
Lukas NEUGEBAUER  
Alexander PUCHER  
Dominik WIESER  
Christian WOHLERT

### Student Assistants

Claudia BLAUENSTEINER  
Luisa FÄRBER  
Hannah FERGG  
Katharina FISCHER  
Enys HERBST  
Johanna KRIPP  
Chiara KUPNIK  
Marie-Luise LOCHMANN  
Veronika RITTER  
Johanna RUHM  
Mark SCHERNER  
Clara SPIELMANN  
Katharina WACHABAUER

### Technical and Administrative Staff

Michaela ANGEL  
Beatrix BETHKE  
Gabriele EICHINGER  
Angelika HORVATH  
Robert KANTA  
Paul KLIER  
Walter LANG  
Ursula LEITNER  
Sylvia MAIR  
Karin MAYER  
Daniela RISONJIC  
Harald TOMBERGER  
Aleksandra TYJAN  
Christina WALK  
Daniela WÖLFLE



## Staff Changes

in alphabetical  
order

### New Employees

New Team Member	Start Date	Function	Team   Working Group
Alexander BARNSTEINER	06.04.2021	Project Assistant	Spatial Research and Spatial Planning
Simon BUNCHUAY-PETH	01.09.2022	University Assistant Post-doc	Population Geography and Demography
Edoardo CARRARO	01.08.2022	University Assistant Prae-Doc	Physical Geography
Erika FAIGEN	01.06.2022	Project Assistant	Human Geography   Economic Geography
Enys HERBST	01.09.2022	Student Assistant	Geoeology
Krzysztof JANOWICZ	01.03.2022	Professor	Cartography and Geographic Information
Nasreen JEELANI	01.09.2022	Project Assistant	Geoeology
Paul KLIER	01.10.2022	Technical Staff	Geoeology
Zilong LIU	01.09.2022	University Assistant Prae-Doc	Cartography and Geographic Information
Rojo Anahi MONTALVO	01.02.2022	Project Assistant	Spatial Research and Spatial Planning & Urban Studies
Benedikt MÜLLER	01.08.2022	Project Assistant	Physical Geography
Balázs PÁGER	01.06.2022	Project Assistant	Human Geography   Economic Geography
Daniela RISONJIC	01.07.2022	Administrative Staff	Geoeology
Veronika RITTER	01.03.2022	Student Assistant	Human Geography   Economic Geography
Meilin SHI	15.08.2022	University Assistant Prae-Doc	Cartography and Geographic Information
Francisca SOTO BRAVO	07.11.2022	University Assistant Prae-Doc	Geoeology & Physical Geography
James VANDENBERG	15.02.2022	University Assistant Prae-Doc	Urban Studies
Christina WALK	01.06.2022	Administrative Staff	Department – Central Administration
Christian WOHLERT	01.06.2022	Technical Staff	Cartography and Geographic Information

### Departures

Departing Team Member	End_Date	Function	Team   Working Group
Michaela ANGEL	05.04.2021	Administrative Staff	Geoeology
Claudia BLAUENSTEINER	31.08.2022	Student Assistant	Geoeology
Peter Johannes GÖRGL	31.08.2022	University Assistant Post-doc	Spatial Research and Spatial Planning
Elisabeth GRUBER	28.02.2022	Project Assistant	Spatial Research and Spatial Planning
Stefan HASELBERGER	30.04.2022	Project Assistant	Physical Geography
Sabine HENNIG	28.02.2022	Professor	Cartography and Geographic Information
Franz HOLAWÉ	30.09.2022	Assistant Professor	Geoeology
Angelika HORVATH	31.08.2022	Administrative Staff	Spatial Research and Spatial Planning & Urban Studies
Jiannis KAUCIC	28.02.2022	Project Assistant	Spatial Research and Spatial Planning
Florian KORN	31.12.2022	Project Assistant	Cartography and Geographic Information
Sabine KRAUSHAAR	30.09.2022	University Assistant Post-doc	Physical Geography
Nele KRESS	31.07.2022	University Assistant Prae-Doc	Urban Studies
Johanna KRIPP	31.12.2022	Student Assistant	Population Geography and Demography
Christine KROISLEITNER	30.11.2022	Project Assistant	Geoeology

Departing Team Member	End_Date	Function	Team I Working Group
Jonas MACHOLD	31.12.2022	Project Assistant	Physical Geography
Sylvia MAIR	31.01.2022	Administrative Staff	Department – Central Administration
Simon MERSCHROTH	31.12.2022	Project Assistant	Population Geography and Demography
Rojo Anahi MONTALVO	15.07.2022	Project Assistant	Spatial Research and Spatial Planning
William RIES	14.01.2022	University Assistant Prae-Doc	Physical Geography
Mark SCHERNER	30.04.2022	Student Assistant	Department – Doctoral School
Martina SCHORN	31.08.2022	Project Assistant	Spatial Research and Spatial Planning
Gunnar STANGE	30.07.2022	University Assistant Post-doc	Population Geography and Demography
Katharina WACHABAUER	30.09.2022	Student Assistant	Physical Geography

## Cartography and Geographic Information

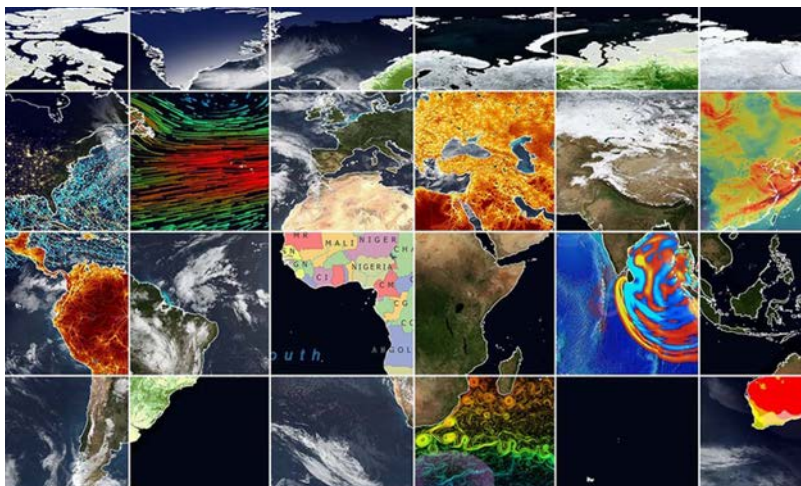
Our international research group works on a wide range of theoretical and applied topics in geocommunication and spatial data science, ranging from cartography and hyper globes to GeoAI. Most of our work is concerned with the representation, management, analysis, and visualization of geographic and (geo)spatial data. Our mission is to design systems that better understand the information needs of an increasingly diverse user base. We are committed to FAIR data principles.

### Research Focus

Our research focuses on three major aspects of geocommunication, geo-visualization, and knowledge representation. In geocommunication, the focus lies on the thematic cartography and mapping of high mountain areas. Geovisualization focuses on novel methods and techniques for visualization, such as 3D displays (hyper globes). Finally, in the area of knowledge representation, we work on improving the retrieval, interpretation, integration, and re(use) of (geo)spatial data. We collaborate extensively with international partners.

### Teaching

We teach courses on fundamentals of GIS and cartography for the bachelor programs of the department and run the master program in cartography and geo-information science. Our teaching is oriented towards an integration of recent research results in a meaningful way into our bachelor, master and doctoral programs.



**Krzysztof  
JANOWICZ**  
*Working Group  
Leader*

### Team

- Markus BREIER
- Luisa FÄRBER
- Benedikt HAJEK
- Sabine HENNIG
- Florian KORN
- Karel KRIZ
- Zilong LIU
- Daniel NELL
- Lukas NEUGEBAUER
- Alexander PUCHER
- Andreas RIEDL
- Meilin SHI
- Harald TOMBERGER
- Dominik WIESER
- Christian WOHLERT
- Daniela WÖLFLE

### Selected Publications

**Janowicz K.**, Sieber R. & Crampton J. (2022): GeoAI, counter-AI, and human geography: A conversation. – *Dialogues in Human Geography*, 12 (3), 446–458.

**Liu Z., Janowicz K.**, Cai L., Zhu R., Mai G. & **Shi M.** (2022): Geoparsing: Solved or Biased? An Evaluation of Geographic Biases in Geoparsing. – *AGILE: GIScience series* 3/9.

**Breier M., Kriz K. & Pucher A.** (2022): Beyond East and West: A Framework for Researching and Communicating Historical Landscapes. – *Abstracts of the International Cartographic Association* 29 (5).

### GeoAI Research

We are heavily involved in the KnowWhereGraph, a 12 billion statements strong geo-enabled knowledge graph of over 30 pre-integrated data layers at the interface between humans and the environment. KnowWhereGraph pilots include disaster relief and simulations, food supply chain, and environmental intelligence applications. Our research focuses on novel GeoAI and machine-learning methods to discover new links within the graph, provide area briefings for any region on earth, and on developing human and machine-readable semantic descriptions of the data to implement FAIR principles.

Further information: [carto.univie.ac.at](https://carto.univie.ac.at)

## Digital Geography

The working group on Digital Geography explores the new means of Geographical Research in the Digital World.

Our work involves testing existing geographical theories and methods with new types of geodata. Also, we investigate new forms of analysis and modelling such as extending or adapting methods & workflows to become more spatially-aware. Furthermore, we are interested in the new technologies that generate, process, store, analyse and share data (smartphones, LBS, LBSN, mobile technical sensors, mobile apps, semi-volunteered online registrations/submissions) with the scope of evaluating and improving the geographical information that is being produced.

### Research Focus

- **Spatial Conscious Machine Learning** || Spatial Heterogeneity & Dependence Features in ML workflows
- **Spatial Crime Analysis** || Law of Crime Concentration, Crime Forecasting, Perception Gap, Ambient Population
- **Location Privacy & Protection Methods** || Semantic Attacks & User Profiling from Location Data

### Teaching

We offer courses for the programs of Master Cartography and Geoinformation, Master Regional Research and Regional Planning, Master Geography, Master Teacher Training Programme: Geography and Economics. Our courses are quantitative and methodological and cover the subjects of: a) **spatial statistics**, b) **descriptive analytics**, c) **predictive analytics**, and d) **location privacy**.



**Ourania  
KOUNADI**

*Working Group  
Leader*

### Team

- Luisa FÄRBER
- Daniela WÖLFLE
- Qilei HUANG

### Selected Publications

Liu X., **Kounadi O.** & Zurita-Milla R. (2022): Incorporating Spatial Autocorrelation in Machine Learning Models Using Spatial Lag and Eigenvector Spatial Filtering Features. – ISPRS International Journal of Geo-Information 11.4, 242; <https://doi.org/10.3390/ijgi11040242>.

Borsci S., Lehtola V. V., Nex F., Yang M. Y., Augustijn E-W., Bagheriye L., Brune C., **Kounadi O.** et al. (2022): Embedding artificial intelligence in society: looking beyond the EU AI master plan using the culture cycle. – AI & society, 1-20; <https://doi.org/10.1007/s00146-021-01383-x>.

### Selected Project

**Mapping and Modelling the Crime Perception Gap** (FWF – Joint Project Austria & Hungary): People's perception of crime risk does not always coincide with the actual situation. This disparity is known as the crime perception gap and may have repercussions on people's lifestyle, social behaviour, and the spatial and economic dynamic. This project will quantify the "gap" and also provide levels of accuracy in space. We will examine the spatial components that may relate to and affect perception. These will be interpreted as spatial covariates to crime risk perception and compared to other well-known covariates. Our analysis will be applied in two urban areas in Austria and in Hungary to examine if perceptual findings are bounded to cultural settings. We will further develop an Sketch Mapping UI as a survey tool that merges a traditional questionnaire approach with digital mental maps. Last, we will develop an innovative GVA UI to interactively visualize and reason our findings.

Further information: [digital-geography.univie.ac.at](https://digital-geography.univie.ac.at)



## Geoecology

The Geoecology Group aims at understanding ecosystem functioning across scales and time. More specifically, our research aims at identifying physical, chemical and biological parameters that control ecosystem carbon turnover on the landscape scale. We pay particular attention to vegetation and soils, as they are proxies for present and past ecosystem conditions. To achieve this, our research employs methods from soil science, ecophysiology and micrometeorology in a geography context. At present most of our projects focus on peatland carbon cycling at various field sites in Austria, the Netherlands, Germany, Poland and Sweden.



### Research

At present most of our projects focus on **peatland carbon cycling** at various field sites in Austria, the Netherlands, Germany, Poland and Sweden.

### Teaching

Our undergraduate teaching provides the students with basic knowledge and skills required to understand and contribute to modern Geoecology. The interdisciplinary nature of Geoecology is reflected in our graduate teaching: It delivers extended knowledge on Wetlands, Terrestrial Ecosystem Ecology, Climatology and Soil Science to students of Geography, Environmental Sciences, Geosciences and Biology. Advanced field and laboratory projects are held in close contact with our research projects.



**Stephan GLATZEL**  
Working Group  
Leader

### Team

- Michaela ANGEL
- Pamela A. BAUR
- Beatrix BETHKE
- Kyle BOODOO
- Camila Aguetoni CAMBUI
- Yujing DENG
- Enys HERBST
- Franz HOLawe
- Nasreen JEELANI
- Paul KLIER
- Christine KROISLEITNER
- Andreas MAIER
- Raphael MÜLLER
- Robert PETICZKA
- Constantin E. PÖLL
- Francisca Antonia SOTO BRAVO
- Daniela RISONJIC

### Selected Publications

**Müller R, Peticzka R. & Inselsbacher E.** (2022): Applicability of the microdialysis technique in dry soils: Impact of soil water content depends on perfusion flow rate. – *Soil Biology and Biochemistry* 177 (108903); <https://doi.org/10.1016/j.soilbio.2022.108903>

Wantzen K. M., Beer F., Jungkunst H. F. & **Glatzel S.** (2022): Carbon Dynamics in Wetlands. – *Encyclopedia of Inland Waters* (e01605); <https://doi.org/10.1016/B978-0-12-819166-8.00051-7>

### Selected Projects

**ReVersal** – Restoring peatlands of the nemoral zone under conditions of varying water supply

**Conservation and Restoration of Peatland Biodiversity in Austria**

**LTWER-CWN** – “Long-Term Ecosystem Research Infrastructure for Carbon, Water and Nitrogen”, is a showcase project of long-term ecological research in Austria



Further information: [geoekologie.univie.ac.at](https://geoekologie.univie.ac.at)

## Human Geography | Economic Geography

Our research addresses multiscalar processes of innovation-based structural change in the wake of grand societal challenges. In particular, we focus on the spatial configuration of innovation processes, new regional development paths and sustainability transitions, disparities in regional development, and challenge-oriented innovation policies. Our research activities are theory-led, evidence-based, and policy relevant. We build and provide scientific expertise on the geography of innovation and regional sustainability transitions.

### Research Priorities

- Innovation-based regional industrial transitions | processes of green and inclusive path development and their spatial consequences | geography of sustainability transitions | challenge-oriented regional innovation systems
- New approaches to regional, innovation & industrial policies | challenge-oriented innovation policies in multilevel governance arrangements
- Unequal regional development | transition processes in disadvantaged regions
- Multiscalar flows of knowledge | global value chains of research & development



### Teaching

Our teaching covers economic and social geography, sustainability transitions, and empirical methods. Through research-led teaching, we offer courses on the geography of innovation and sustainability transitions, regional development, and innovation policy and offer the master degree specialisation on “Socio-Economic Transformation” which focuses on the role of innovation in addressing sustainability challenge.



©BMBF/Thilo Schoch

**Michaela TRIPPL**  
Working Group  
Leader

### Team

- |                                 |                       |
|---------------------------------|-----------------------|
| • Elisabeth AUFHAUSER           | • Alessio GIUSTOLISI  |
| • Simon BAUMGARTINGER-SEIRINGER | • Gudrun HAINDLMAIER  |
| • Maximilian BENNER             | • Martin HEINTEL      |
| • Veronika DESCH                | • Ursula LEITNER      |
| • Erika FAIGEN                  | • Leonard LEMKE       |
| • Sebastian FASTENRATH          | • Balázs PÁGER        |
|                                 | • Veronika RITTER     |
|                                 | • Norbert WEIXLBAUMER |

### Selected Publications

Tödting F., **Trippl M.** & **Desch V.** (2022): New directions for RIS studies and policies in the face of grand societal challenges. – *European Planning Studies* 30 (11), 2139-2156; <https://doi.org/10.1080/09654313.2021.1951177>

**Baumgartinger-Seiringer S.** et al. (2022): Re-considering regional structural conditions for industrial renewal. – *Regional Studies* 56 (4), 579-591; <https://doi.org/10.1080/00343404.2021.1984419>

**Benner M.** (2022): Retheorizing industrial-institutional coevolution: a multidimensional perspective. – *Regional Studies* 56 (9), 1524-1537; <https://doi.org/10.1080/00343404.2021.1949441>

### Selected Project

**GloRI – A Global Value Chain of Research & Innovation:** This project explores dynamic decision-making processes on mineral-based materials in research and innovation for renewable energy technologies.

**RIS4Danu – Sustainable Smart Specialisation for the Re-opening of Industrial Sites in the Danube Region:** At the heart of the RIS4Danu project is the goal of applying an evidence-based Smart Specialisation approach to support place-based innovation for green and inclusive transitions in regions along the Danube River.

Further information: [humangeo.univie.ac.at](https://humangeo.univie.ac.at)





## Physical Geography ENGAGE – Geomorphological Systems and Risk Research

### Research

The research group ENGAGE (Geomorphological Systems and Risk Research) led by Prof. Glade has its core research competences in the fields of geomorphological processes and environmental changes, and the hazards and risks resulting thereof. Methodically, the group includes a high level of expertise in the fields of monitoring and field measurements, sampling, remote sensing, modelling, and laboratory analysis, but also strongly contributes to the scientific discourse at a theoretical level. Current studies focus on monitoring and modelling of different types of landslide processes as well as fluvial erosion, research on extreme events, connectivity research, biogeomorphology, analysis of the effects of Global Change within a multi-hazard risk perspective, vulnerability, resilience, risk research and periglacial geomorphology, and research on human-environment interactions. The highly dynamic group currently includes 2 postdocs, 1 senior lecturer, 1 senior scientist, 7 PhD students, 5 student assistants, and 2 non-scientific staff members. A large pool of field equipment (including UAVs, terrestrial laser scanners, drilling equipment) is available and frequently used in education and research.



### Teaching

The possibilities to specialize in the fields of physical geography are manifold. Teaching is tightly coupled to the research in the group in order to allow students to profit from the available expertise, and to bring them in touch with applied questions, enhancing their chances in various segments of the job market.

#### OerISK – Risk Prevention and Disaster Management

Heading the postgraduate MSc. program – details at [oerisk.at](http://oerisk.at)



© Barbara Mair

**Thomas GLADE**  
Working Group  
Leader

### Team

- |                        |                       |
|------------------------|-----------------------|
| • Francisca SOTO BRAVO | • Jonas MACHOLD       |
| • Edoardo CARRARO      | • Benedikt MÜLLER     |
| • Hannah FERGG         | • John Edward PEREZ   |
| • Stefan HASELBERGER   | • Ronald PÖPPL        |
| • Jennifer DONATO      | • William RIES        |
| • Robert KANTA         | • Clara SPIELMANN     |
| • Sabine KRAUSHAAR     | • Aleksandra TYJAN    |
| • Pedro LIMA           | • Janek WALK          |
| • Philipp MARR         | • Katharina WACHBAUER |

### Selected Publications

**Lima P.** et al. (2022): Literature review and bibliometric analysis on data-driven assessment of landslide susceptibility. – *Journal of Mountain Science* 19 (6), 1670-1698.

**Marr P.** et al. (2022): Age, origin and palaeoclimatic implications of peri- and paraglacial boulder-dominated landforms in Rondane, South Norway. – *Geomorphology* 408, 108251.

**Pöpl R.** et al. (2022): Deeply Incised Valley Meanders of the Bohemian Massif. – In: Embleton-Hamann, C. (eds.): *Landscapes and Landforms of Austria*. Springer, 147-161.

**Wang X.** et al. (2022): A novel quality control model of rainfall estimation with videos – A survey based on multi-surveillance cameras. – *Journal of Hydrology* 605.

### Selected Projects

**NoeMOTION** – Mobility, hazard and risk analysis of landslides in Lower Austria

**PHUSICOS** – Nature-based solutions to reduce risk in mountain landscapes

**PARATUS** – Disaster preparedness and resilience for systemic risks

**I-CONN** – Interdisciplinary connectivity: Understanding and managing complex systems using connectivity science

**MoNEW** – Evaluation of existing landslide susceptibility maps

Further information: [geomorph.univie.ac.at](http://geomorph.univie.ac.at)







## Trans|Form Population Geography and Demography

The TransForm Research Group conducts ground-breaking research on the nexus of migration and global change. It seeks to advance academic knowledge and debates on the (im-)mobility of populations in the context of environmental change and social transformation processes, and to conduct research with societal relevance. We aim to generate theoretical knowledge and empirical findings that further our understanding of the impact of global change processes on migration and the potential of migration and translocal connectedness for social and ecological resilience.

### Research Focus

We conduct research in the following key areas:

- Drivers / Impact of migration in the context of global change
- Vulnerability and resilience of coupled and connected livelihoods and social-ecological systems
- Mixed method, meso-level approaches that combine the explanatory power of case study research with the ability to generalize and to draw conclusions on higher level
- Inclusive research designs that “leaves no one behind” and that contributes to empowerment of all stakeholders

Our research activities stand on three pillars

- Conceptual Pillar: Translocal social resilience
- Methodological Pillar: Environment and Migration Data Lab
- Empirical Pillar: Grounding research with empirical evidence



Fieldwork is central to our idea of doing research. In 2022 – after the lifting of covid restrictions – the Trans|Form team was able to conduct empirical research in Nigeria, Ghana, Ethiopia, Morocco, Thailand and Korea again

### Teaching

Our teaching focuses on the interface of “Population, Environment, and Development” and seeks to enable students to understand and analyse complex socio-ecological phenomena by using geographical concepts and methods, to reflect and to search for innovative solutions. We place a high priority on the close interlinking of research and teaching.



© Barbara Mair

**Patrick SAKDAPOLRAK**  
Working Group  
Leader

### Team

- |                       |                              |
|-----------------------|------------------------------|
| • Ayansina AYANLADE   | • Simon MERSCHROTH           |
| • Marion BORDERON     | • Raffaella PAGOGNA          |
| • Simon BUNCHUAY-PETH | • Gunnar STANGE              |
| • Coline GARCIA       | • Harald STERLY              |
| • Rachael DINIEGA     | • Reena TADEE                |
| • Johanna KRIPP       | • Mongkon THONG-CHAITHANAWUT |
| • Leonard LEMKE       | • Lemlem Fitwi               |
| • Karin MAYER         | • WELDEMARIAM                |

### Selected Publications

**Ayanlade A.,** Oluwaranti A., Ayanlade O. S., **Borderon M., Sterly H., Sakdapolrak P.,** Jegede M. O., **Weldemariam L. F.** & Ayinde A. F. O. (2022): Extreme climate events in sub-Saharan Africa: A call for improving agricultural technology transfer to enhance adaptive capacity. – Climate Services 27, [100311].

**Sterly H.** & Wirkus L. (2022): Analysing refugees' secondary mobility using mobile phone Call Detail Records (CDR). In: Salah A.A. et al. (eds.): Data Science for Migration and Mobility. Oxford University Press, 99–120.

**Sakdapolrak P., Pagogna R. & Diniega R.** (2022): Covid-19, Migration und Translokalität. – Geographische Rundschau (GR) 74 (5), 14–17.

**Weldemariam L. F., Sakdapolrak P. & Ayanlade A.** (2022): The impact of migration on food security in Tigray, Northern Ethiopia: The role of migration patterns and remittances. – Erdkunde 76 (4), 271–288.

### Selected Projects

**IOM Moldova Project** – 2-years project to mainstream migration aspects into the National Adaptation Plan in Moldova

**HABITABLE (H2020)** – Linking Climate Change, Habitability and Social Tipping Points: scenarios for Climate Migration – Migration governance and agricultural

Further information: [population.univie.ac.at](https://population.univie.ac.at)



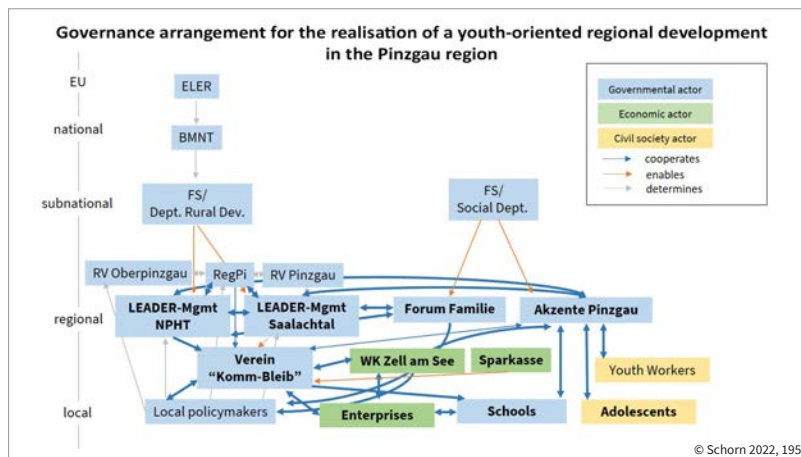


## Spatial Research and Spatial Planning

In our working group, we share the interest in how societal activities re-shape spaces, combined with social, economic, as well as ecological concerns. From there stems the synergetic ambition of advancing theory, producing analytical results and, ultimately, assessing and inspiring policy and planning practice. We employ and combine various quantitative and mostly qualitative research methods of empirical social research. We engage with the local and national planning community as well as we actively contribute to international scientific networks like ARL, AESOP, ERSA and the Regional Studies Association.

### Research Focus

Taking a governance perspective, we focus on institutions and actors of policy and planning, civil society and economy – their challenges, conflicts and cooperation in urban and regional development, around e.g., housing, mobility and public services. We analyse urban neighbourhoods, cities and (polycentric) city networks, functional urban regions, cross-border areas, rural areas, centre-periphery relations and their dynamic over time. Thereby, we frequently employ comparative research designs between places, regions and scales – from local to European and Transatlantic.



### Teaching

Our working group teaches courses and supervises theses in all curricula of Geography. A special focus lies on teaching in the master's programme of Spatial Research and Spatial Planning (Raumforschung und Raumordnung). We are also active in the Erasmus Mundus study programme of Urban Studies (4CITIES) – a unique interdisciplinary and international master programme, implemented in cooperation with universities in Brussels (ULB, VLB), Copenhagen and Madrid (UCM, UAM).



**Alois HUMER**  
Working Group  
Leader

### Team

- Alexander BARNSTEINER
- Yvonne FRANZ
- Peter GÖRGL
- Elisabeth GRUBER
- Angelika HORVATH
- Jiannis KAUCIC
- Chiara KUPNIK
- Rojo Anahi MONTALVO
- Martina SCHORN

### Selected Publications

**Humer A.,** Cardoso R. & Meijers E. (2022): Breaking with the Spatial-Cycle Model: the shift towards 'syncurbanisation' in polycentric urban regions. – *Regional Studies* 56, 21-35; <https://doi.org/10.1080/00343404.2021.1969008>

**Humer A.** (2022): Conceptual Freedom in Planning Education and Students' Methodological Learning. – *Planning Practice & Research* 37 (4), 412-426; <https://doi.org/10.1080/02697459.2020.1758429>

Greinke L., **Franz Y., Hummer A.,** Kazepov Y. & Danielzyk R. (2022): Exploring urban and regional infrastructure from a spatial perspective. – *European Journal of Spatial Development* 19 (4), 99-104; <https://doi.org/10.5281/zenodo.7256948>

**Schorn M.** (2022): Strategien einer jugendorientierten Regionalentwicklung: eine fallvergleichende Analyse in von Jugendabwanderung betroffenen ländlichen Räumen Deutschlands und Österreichs. – PhD thesis, 357 p.

### Selected Projects

**CURB** – The Covid-19 Pandemic as disruptive force for urbanization (FWF)

**OnOffShop** – Online and offline shopping in Vienna: a consumers' spatial behaviour perspective (OEAD)

**SiforREF** – Integrating Refugees in Society and Labor Market through Social Innovation (INTER-REG).

Further information: [raumforschung.univie.ac.at](http://raumforschung.univie.ac.at)



## Urban Studies

The working group explores the intersection of social, ecological, and technical processes in cities to craft integrated solutions and contribute to more sustainable, resilient, and equitable urban developments. More specifically, the group analyses how global change processes manifest in urban areas, drive change, and compel cities to adapt and accelerate sustainability transformations.

Our key areas of focus include:

- Urban Sustainability Transformations (including the implementation of the United Nation's Sustainable Development Goals (SDGs) in cities)
- Socio-spatial disparities, participation and social innovation
- Urban vulnerability, resilience and adapting cities to cope with climate change
- Circular Cities and the resilience of urban food systems

### Research Focus

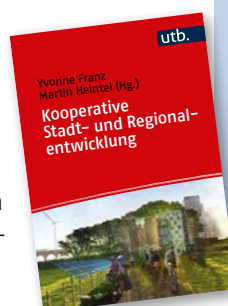
Through the development and application of an Urban Sustainability Living Lab (USLL) approach, the group strives to formulate equitable urban adaptation strategies which combine emerging digital technologies with social innovation processes, nature-based solutions and more inclusive multi-level governance approaches. This process is driven by transdisciplinary and transformative research and methods which prioritize mutual learning, collaborative knowledge co-creation, and experimentation (incorporating urban actors from research, administration, the private sector, practice, and civil society).



Learning transdisciplinary skills and methods during the 4Cities Spring School on Methods and Skills for Urban Research(ers) in 2022.  
(Source: Michael Lueger, 2022)

### Teaching

The group's main objective is to support students in identifying, analysing, and evaluating complex social-ecological-technical urban (sub)systems and their interactions from a sustainability perspective. The applied approach bridges theory and practice by enhancing students technical, method, and transdisciplinary skills.



**Kerstin KRELLENBERG**  
Working Group  
Leader

### Team

- Yvonne FRANZ
- Angelika HORVATH
- Nele KRESS
- Marie-Louise LOCHMANN
- James VANDENBERG

### Selected Publications

**Franz Y.** & Gruber E. (2022): The Changing Role of Student Housing as Social Infrastructure. – Urban Planning 7 (4), 457–469; <https://doi.org/10.17645/up.v7i4.5661>

**Franz Y.** & Heintel M. (2022): Kooperative Stadt- und Regionalentwicklung. Ffascultas (= UTB 5880)

Schnelzer J., **Franz Y.** et al. (2022): The role of institutional opportunity structures for refugee integration in Vienna. Learnings and modifications in the aftermath of the long summer of migration in 2015. – Innovation: The European Journal of Social Science Research; <https://doi.org/10.1080/13511610.2022.2071239>

### Selected Activities

**4Cities Spring School on Methods and Skills for Urban Research(ers)** – implementation of a one-week-long Spring School for students being enrolled in the Erasmus Mundus Joint Master in Urban Studies (4Cities).

**Sustainability Challenge** – we are member of the teaching and mentoring team within the Sustainability Challenge which is an interdisciplinary, practice-oriented course implemented by universities in Vienna, Graz and Salzburg.

**Postgraduate course “Cooperative Urban and Regional Development”** – Members of the working group lead (together with Martin Heintel) and contribute to the postgraduate course at the Postgraduate Center, University of Vienna.

Kerstin Krellenberg – **Member of the Advisory Board for Urban Planning and Urban Design** by appointment of the Mayor of the City of Vienna.

Further information: [urbanstudies.univie.ac.at](https://urbanstudies.univie.ac.at)

## Teaching

### Facts & Figures

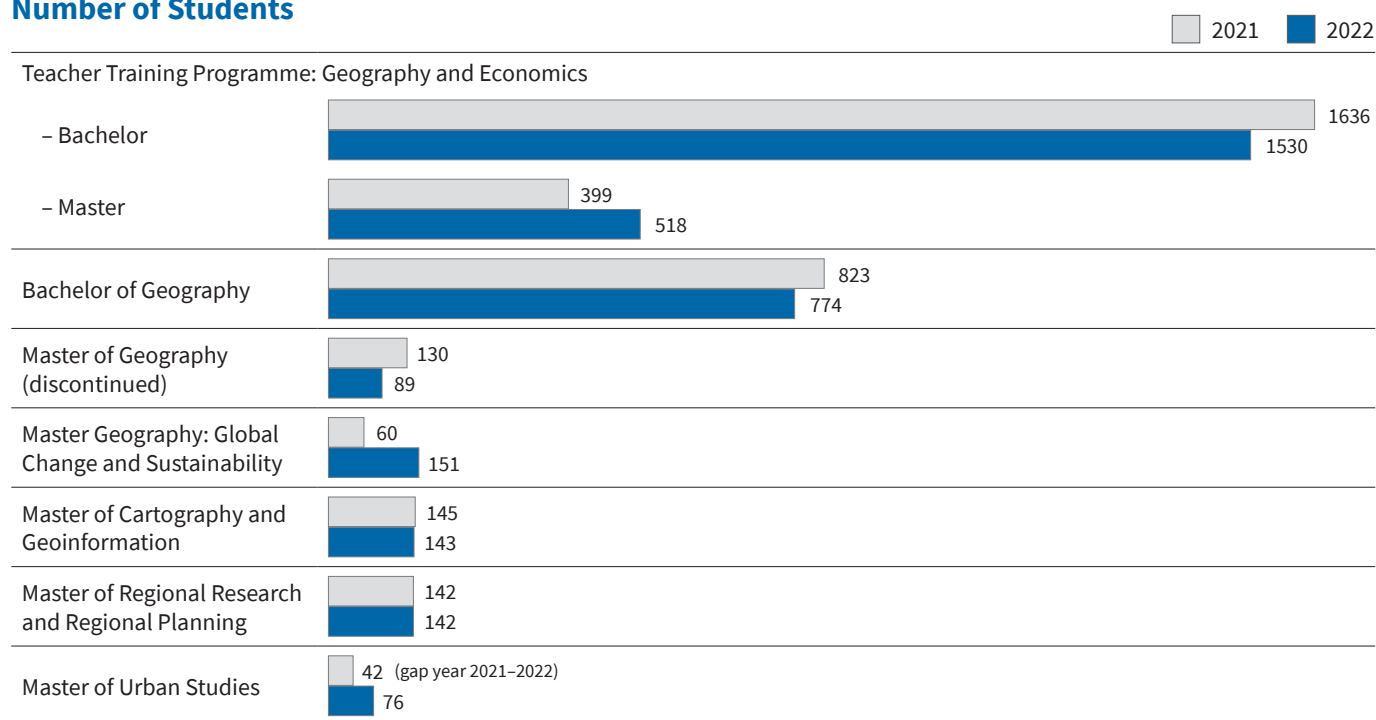
From 2021 to 2022 the number of Bachelor beginners increased moderate, while a significant increase can be reported for the Master's program. In both Teacher Training Program, the beginners decreased moderate. In the Master's programs, the number of students has shifted from Master of Geography to Master Geography: Global Change and Sustainability. This Master program also has the relatively strongest increase in students.

### Director of Studies 29 – Geography

Director: Robert PETICZKA

Deputy Directors: Gudrun HAINDLMAIER, Christiane HINTERMANN, and Andreas RIEDL

### Number of Students



Beginners	Winter Term		Summer Term	
	2021W	2022W	2021S	2022S
Bachelor	237	235	104	121
Bachelor Teacher Training Programme	245	278	72	25
Master Geography: Global Change and Sustainability	49	79	21	29
Master of Cartography and Geoinformation	27	25	19	12
Master of Regional Research and Regional Planning	25	22	20	18
Master of Urban Studies	39	37	–	–
Master Teacher Training Programme	108	111	66	60

Graduations	2021*
Bachelor	68
Bachelor Teacher Training Programme	191
Master of Geography (discontinued)	14
Master of Cartography and Geoinformation	17
Master of Regional Research and Regional Planning	17
Master of Urban Studies	39
Master Teacher Training Programme	41

\* complete data for 2022 not yet available (Feb. 2023)



## Students' Representatives

After a long period of restrictions due to the Corona pandemic, we were finally able to enjoy university life to the fullest again in 2022, welcoming students to our StV room (Kammerl) and organizing a wide variety of events for geography students.

### Organization

Every two weeks, we come together in the conference room in the NIG for a meeting and discuss study-related concerns, find solutions to problems, and organize activities for the students. This year we also went on a retreat to Hungary in March, where we spent a weekend working diligently on semester planning and gathering ideas for geo events.

### Advising

As in previous years, we offer weekly student advising sessions where we are available to answer questions from Geo students by phone, email, and in person. Students are also welcome to stop by our StV-Kammerl during advising hours for a nice chat over coffee and mate; despite inflation, our prices remain the same.

### Events

In addition to sporting activities, such as a bike tour along the Danube, hikes on Vienna's city hiking trails and a Geo-Olympics with various games on the Danube Island, evening events and parties were not neglected this year. Both at the monthly regulars' tables at Café Kreuzberg and at our two Geo-Festivals at The Loft, students were able to celebrate together into the night. For this year's freshmen, we again organized several get-to-know-you meetings in October. The highlight of the "Ersti-Week" was the "Ersti-Seminar", where we spent the weekend with 30 freshmen in Forchtenstein and organized various workshops, activities and games for the start of studies and networking.

Contact: [stv.geographie@oeh.univie.ac.at](mailto:stv.geographie@oeh.univie.ac.at)



Group picture of our retreat in Hungary



### Team – StV Bachelor / Master

- **Merlin SCHMID:** Master Geography (Specialisation: Population Dynamics & Migration)
- **Hannah KÖTTERL:** Bachelor (Specialisation: Physical Geography)
- **Maximilian BRUNNER:** Bachelor Geography (Specialisation: Cartography and Geo-information)
- **Markus ÖMER:** Master Geography (Specialisation: Physical Geography)
- **Frederik DOLDERER:** Bachelor Geography
- **Christoph HAARICH:** Bachelor Geography (Specialisation: Cartography and Geo-information)

### Team: StV Lehramt

- **Sebastian Vera BARRIGA:** Bachelor (Subjects: Geography & Economics, Spanish)
- **Catherina SCHUHMANN:** Bachelor (Subjects: Geography & Economics, History)
- **Miriam WOLF:** Bachelor Geography / Bachelor (Subjects: Geography & Economics, Mathematics)
- **Daniela MONSBERGER:** Bachelor (Subjects: Geography & Economics, Biology)

### Representatives at the Faculty

- **Frederik DOLDERER:** Bachelor Geography
- **Silvie Elisa WOLF:** Bachelor (Subjects: Geography & Economics, Biology)

Further information: [stvgeographie.at](http://stvgeographie.at)

**Spatial Relations**

Rachael Diniega



Climate Change  
Mobilities  
Social Remittances

Coline Garcia



Environmental Change  
Choice  
Vulnerabilities

Quilei Huang



Crime Perception  
Spatial Crime Analysis  
Urban Planning

Zilong Liu



Knowledge Graph  
Geo-Semantics  
Geo AI Ethics

Mikel Oleaga



Social Capital  
Entrepreneurship  
Coworking

**Transformation**

Alessio Giustolisi



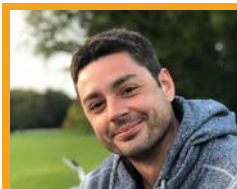
Innovation Policy  
Green Transformation  
Knowledge Flows

Leonard Lemke



Covid-19  
Resilience  
Tourism

James Vandenberg



Urban Agriculture  
Resilience  
Governance

Raffaella Pagogna



Migration Infrastructure  
Decision-Making  
Migration Governance

Reenga Tadee



Labor Migration  
ICT & Social Media  
Embeddedness

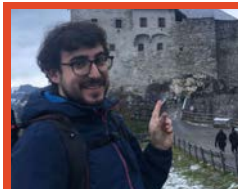
**Restoration**

Pamela Baur



Wetlands  
GHG Exchange  
Pathways

Edoardo Carraro



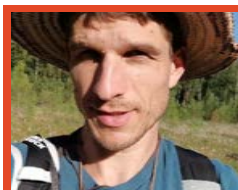
Landslides  
Natural Hazards  
Monitoring

Raphael Müller



Peatland  
Decomposition  
Soil Science

Constantin Pöll



Peatland  
Biodiversity  
Ecological Restoration

Mongkon Thonchaithanawut



Climate Change  
Mobilities  
Financial Remittances

## Greetings from the PhDs at the Department for Geography and Regional Research!

2022 marked an exciting and productive year for us PhDs at the Geography department as our projects progressed, successful defenses were completed, and several new PhD students joined us from around the world.

We now represent a diverse international group of young academics united by our drive to explore contemporary social and environmental sustainability challenges. We gathered in a number of seminars, lectures and social events and also had the chance to present our work to fellow students and at several international conferences.

In our PhD projects, we started getting back in the field with some of us traveling around the globe for fieldwork including places such as South Korea, Ethiopia, Morocco, and others. Moreover, we spent long days in our offices and labs, and finally managed to publish some exciting articles. Our research spans across the social and the physical sides of geography.

As visualized below, our research topics yet correlate on the cross-cutting themes of **#transformation**, **#restoration** and **#spatial relations**.

We look forward to continuing our research in 2023!

## Supervision of PhD Students

in alphabetical  
order

### Completed Dissertations

PhD Student	Title of the Dissertation	University	Supervisor
Simon BAUMGAR-TINGER-SEIRINGER	Innovation-based regional restructuring: Towards a systemic and integrative understanding of regional industrial path development	University of Vienna	Michaela Trippl
Ruth BEILHARZ	Möglichkeiten und Grenzen in Bürgerbeteiligungsprozessen unter dem Aspekt der kulturellen Nachhaltigkeit (Teamdissertation)	Alpen-Adria-Universität Klagenfurt	Martin Heintel
Haoyuan HONG	Landslide susceptibility mapping using integration models	Nanjing Normal University	Thomas Glade
Pedro Henrique Muniz LIMA	Landslide susceptibility mapping at national scale for the Austrian territory - Scientific challenges within applicable solutions	University of Vienna	Thomas Glade
Sonja RUBE	Möglichkeiten und Grenzen in Bürgerbeteiligungsprozessen unter dem Aspekt der kulturellen Nachhaltigkeit (Teamdissertation)	Alpen-Adria-Universität Klagenfurt	Martin Heintel
Martina SCHORN	Strategies to attract return migrants. A case study on youth-sensitive rural development in Austria and Germany.	University of Vienna	Alois Humer, Hans Blotevogel, Heinz Fassmann

### Ongoing Dissertations

PhD Student	Title of the Dissertation	University	Supervisor
Pamela A. BAUR	Greenhouse gas exchanges of wetland ecosystems in Austria	University of Vienna	Stephan Glatzel
Danielle CARBON	Der Einfluss wiederkehrender dürebedingter Trockenperioden in den Sommermonaten auf die leitungsgebundene Trinkwasserversorgung am Beispiel des deutschen Bundeslands Hessen	University of Vienna	Thomas Glade
Edoardo CARRARO	Landslide dynamics – from local monitoring to spatial analysis	University of Vienna	Thomas Glade
Yujing DENG	Recalcitrance of peats: A study on the consequences of nutrient addition and soil moisture changes in diverse peats from Austria.	University of Vienna	Stephan Glatzel
Rachael DINIEGA	The impact of translocal social remittances on the environment in Morocco	University of Vienna	Patrick Sakdapolrak
Alexandra FRANGENHEIM	New regional industrial path development in the context of societal dynamics. Multi-scalar influences, inter-path dependencies and barriers to change	University of Vienna	Michaela Trippl
Michael FRIESENECKER	Neither particular, nor universal! Gentrification in Vienna between mitigated displacement pressures, resistance and new challenges	University of Vienna	Heinz Fassmann
Coline GARCIA	Understanding the environmental impact on migration through the use of longitudinal data	University of Vienna	Patrick Sakdapolrak, Marion Borderon
Alessio GIUSTOLISI	Place-Specific Factors and the Design and Implementation of Smart Specialisation Strategies	University of Vienna	Michaela Trippl, Maximilian Benner
Joshua GRIGSBY	Death by storytelling? Myths and silences in policy narratives of sustainable futures.	University of Vienna	Heinz Fassmann

PhD Student	Title of the Dissertation	University	Supervisor
Benedikt HAJEK	Automatisierte Methoden und Darstellungslimitierungen von Open- und VGI-Daten	University of Vienna	Wolfgang Kainz, Karel Kriz
Stefan HASELBERGER	Disturbance and Stability - Quantification of biogeomorphic feedbacks in the glacier forefield	University of Vienna	Sabine Kraushaar
Qilei HUANG	Exploring and Modelling the Reality and Perception of Crime Prevalence in the Urban Environment.	University of Vienna	Ourania Kounadi
Yenny Alejandra JIMÉNEZ DONATO	Embedding local landslide monitoring in spatial hazard and risk assessment	University of Vienna	Thomas Glade
Giannis KAUCIC	European Cross-Border Cooperation. Stages of territorial integration and impacts on regional development.	University of Vienna	Axel Priebis
Nele KRESS	Transformative Governance Capacities of Circular Cities in Europe	University of Vienna	Kerstin Krellenberg
Christine KROISLEITNER	Assessment of agricultural used peatland in Austria and its GHG-emission potential in a changing climate	University of Vienna	Stephan Glatzel
Leonard Kwhang-Gil LEMKE	Transformative Regional Economic Resilience: A Comparative Investigation into Covid-19 and Agritourism Development in Rural Thailand and Austria	University of Vienna	Michaela Trippl, Patrick Sakdapolrak
Simon LIPBURGER	Nachhaltige Tourismusmobilität durch Raumplanung	University of Vienna	Heinz Fassmann
Zilong LIU	On Platial Variability in Neuro-Symbolic Representation and Reasoning over Knowledge Graphs	University of Vienna	Krzysztof Janowicz
Raphael MÜLLER	Mechanisms of peat formation in different wetland ecosystems	University of Vienna	Stephan Glatzel
Elisabeth MUSIL	Should I stay or should I go? Migrations- und Verbleibperspektiven international Studierender aus Südosteuropa in Wien nach Studienabschluss.	University of Vienna	Heinz Fassmann
Sopon NARUCHAIKUSOL	Understanding household livelihoods vulnerability to climate-related risks: A comparative study in rural Thailand	University of Bonn	Patrick Sakdapolrak
Kayly OBER	Governing the climate-migration-adaptation nexus. A multi-level stakeholder and policy analysis in Thailand	University of Bonn	Patrick Sakdapolrak
Mikel OLEAGA	Entrepreneurship and endogenous development in peripheral areas. The catalytic role of coworking spaces	University of Vienna	Michaela Trippl
Raffaella PAGOGNA	The future in (im)mobility: aspirations and desires to migrate and the role of ICT in Ethiopia	University of Vienna	Patrick Sakdapolrak
John Edward PEREZ	Numerical modelling within connectivity research	University of Vienna	Ronald Pöpl
Constantin E. PÖLL	Conservation and Restoration of Peatland Biodiversity in Austria	University of Vienna	Stephan Glatzel
Stefan PREMM	Rekonstruktion der historischen Waldnutzung im Einzugsgebiet der Eisenproduktion des Steirischen Erzberges im Hinblick auf deren geomorphologischen Folgewirkungen	University of Vienna	Christine Embleton-Hamann
Daniel RAITHOFER	Intellectual resilience als integratives Unterrichtskonzept in Geographie und wirtschaftl. Bildung zum förderlichen und sinnstiftenden Umgang mit Krisen und Veränderungen	University of Vienna	Christiane Hintermann
Peter A. RUMPOLT	Spatial mobility of important historical figures in Austria(-Hungary) over the course of time. Historical-geographical population and migration research on the basis of biographical data.	University of Vienna	Heinz Fassmann



PhD Student	Title of the Dissertation	University	Supervisor
Raphael SEDLITZKY	Sustainable urban development in times of global crisis: Green recovery approaches as chance for urban sustainability transformations	University of Vienna	Kerstin Krellenberg
Meilin SHI	Concept Drift in Geo-Knowledge Graphs	University of Vienna	Krzysztof Janowicz
Francisca SOTO BRAVO	Investigation of carbon dynamics in landslides using geoecological tools and methods.	University of Vienna	Thomas Glade, Stephan Glatzel
Reena TADEE	Mediatized mobility pathways of Thai Migrant Workers in South Korea	University of Vienna	Patrick Sakdapolrak, Harald Sterly
Mongkon THONG-CHAITHANAWUT	Migration influenced by environmental change in Thailand	University of Vienna	Patrick Sakdapolrak, Marion Borderon
James VANDENBERG	Assessing the Impact of Urban Agriculture on the Resilience Capacities of Urban Food Systems	University of Vienna	Kerstin Krellenberg
Lemlem Fitwi WELDEMARIAM	Understanding the food security-migration nexus. A case study from Tigray region, Ethiopia	University of Vienna	Patrick Sakdapolrak, Ayansina Ayanlade
Laura WLOKA	Which role can remittances play in climate change adaptation funding and how can they be integrated into ODA and national programs? The example of the Republic of Moldova	University of Vienna	Patrick Sakdapolrak, Harald Sterly

## Research Projects (Third-party funded)

in alphabetical  
order

Title	Funding Agency	Principal Investigator & Co PI	Research Associates	Amount	Time Period
<b>AGRUMIG</b> – “Leaving something behind” – Migration governance and agricultural & rural change in “home” communities: comparative experience from Europe, Asia and Africa	EU-H2020	Patrick Sakdapolrak, Marion Borderon	Raffaella Pagogna, Harald Sterly, Simon Merschroth	431,610 EUR	2019–2022
<b>Bedarfserhebung Erwachsenenbildung in Osttirol.</b> Strategische Ausrichtung des Bildungshauses Osttirol	Verein Bildungshaus Osttirol	Martin Heintel		19,900 EUR	2022–2024
<b>Beyond East and West</b> – Geocommunicating sacred landscapes	FWF	Karel Kriz	ÖAW	343,072 EUR	2020–2023
<b>Conservation and Restoration of Peatland Biodiversity in Austria</b>	BMK	Stephan Glatzel	Constantin Eduardo Pöll, Michael Steiner, Heidi Weingartner	611,737 EUR	2022–2026
<b>Cultural Mobility Studies</b>	FWF doc.funds	Patrick Sakdapolrak (deputy speaker & key researcher)	Rachael Diniega	1,331,836 EUR	2019–2023
<b>CURB</b> – The Covid-19 Pandemic as disruptive force for urbanization	FWF	Alois Humer	Anna Kajosaari, Martina Schorn	386,751 EUR	2022–2025
<b>GloRI</b> – A Global Value Chain of Research and Innovation: Governance and Power in designing research for sustainable mineral-material uses	EU-H2020-MSCA-IF_2020	Erika Faigen, Michaela Trippl	–	279,250 EUR	2022–2025
<b>HABITABLE</b> – Linking Climate Change, Habitability and Social Tipping Points: Scenarios for Climate Migration	EU-H2020	Patrick Sakdapolrak, Harald Sterly	Marion Borderon	500,000 EUR	2020–2024
<b>i-CONN</b> – Marie Skłodowska-Curie Innovative Training Network (ITN) project	EU-H2020 Marie Curie	Ronald Pöppl	John Edward Perez	238,287 EUR	2019–2023
<b>Industrial-institutional co-evolution in regional economies</b>	Lise Meitner (FWF)	Maximilian Benner, Michaela Trippl	–	175,780 EUR	2021–2023

Title	Funding Agency	Principal Investigator & Co PI	Research Associates	Amount	Time Period
<b>LAWIS</b> – Lawinenwarndienst Informationssystem (KommTool)	LWD	Karel Kriz	–	30,000 EUR per year	since 2002
<b>LTER CwN</b> – Long-Term Ecosystem Research Infrastructure for Carbon, Water und Nitrogen	FFG	Stephan Glatzel	Andreas Maier	821,116 EUR	2017–2022
<b>Migration Moldova</b> – Mainstream migration aspects into the National Adaptation Plan in Moldova	IOM	Harald Sterly, Patrick Sakdapolrak	–	69,800 EUR	2021–2023
<b>MoNEW</b> – Re-Evaluation of existing landslide susceptibility maps	RC Lower Austria	Thomas Glade	Pedro Lima	99,100 EUR	2021–2022
<b>NoeMOTION</b> – Mobility, hazard, and risk analysis of selected landslides in Lower Austria	RC Lower Austria	Thomas Glade	Pedro Lima	78,808 EUR	2019–2022
<b>ÖRÖK Atlas</b>	Federation	Karel Kriz	–	50,000 EUR per year	since 2004
<b>PARATUS</b> – Promoting disaster preparedness and resilience by co-developing stakeholder support tools for managing the systemic risk of compounding disasters	EU-Horizon	Thomas Glade, Philipp Marr	Alejandra Jimenez Donato	347,748 EUR	2022–2026
<b>PeatGov Austria</b> – Tracking down Austria's peat	ACRP	Stephan Glatzel	Christine Kroisleitner	77,827 EUR	2020–2023
<b>PHUSICOS</b> – ‘According to nature’ – solutions to reduce risk in mountain landscapes	EU-H2020	Sabine Kraushaar	Stefan Haselberger	470,000 EUR	2018–2022
<b>POLISS</b> – Policies for Smart Specialisation	EU-H2020-MSCA-ITN	Michaela Trippl	Alessio Giustolisi	264,207 EUR	2019–2023
<b>PRINCESS</b> – Peatland Rewetting In Nitrogen-Contaminated Environments	FWF/Biodiversa	Stephan Glatzel	Kylee Boodoo	265,545 EUR	2021–2024
<b>RegReSir</b> – Regional Resilience and Sustainable Industrial Restructuring	Norwegian Research Council	Michaela Trippl, Sebastian Fastenrath	–	–	2020–2022

Title	Funding Agency	Principal Investigator & Co PI	Research Associates	Amount	Time Period
<b>ReVersal</b> – Restoring peatlands of the nemoral zone under conditions of varying water supply	FWF/Biodiversa	Stephan Glatzel	Nasreen Jeelani	250,026 EUR	2022–2025
<b>Riedenkarten AT</b>	Österreich Wein Marketing GmbH (ÖWM)	Karel Kriz	Technisches Büro für Landschaftsplanung plan+land, Artner & Tomasits OG	210,000 EUR	2018–2022
<b>RIS4Danu</b> – Sustainable Smart Specialization for the Re-Opening of Industrial Sites in the Danube Region	HorizonEurope	Michaela Trippl, Simon Baumgartner-Seiringer, Sebastian Fastenrath	Veronika Desch, Balázs Páger	346,119 EUR	2022–2024
<b>Shahi Art and Architecture from Afghanistan to the West Tibetan Frontier at the Dawn of the Islamic Era</b>	ÖAW	Karel Kriz	Austrian Center for Digital Humanities and Cultural Heritage	14,148 EUR	2021–2022
<b>SiforREF</b> – Integrating Refugees in Society and Labor Market through Social Innovation	EU – INTERREG Central Europe Program	Franz Yvonne, Yuri Kazepov (Dept. Soc.)	Elisabetta Mocca (Dept. Soc.), Judith Schnelzer (Dept. Soc.)	250,080 EUR	2019–2022
<b>TopoMap NP Hohe Tauern</b> – Großmaßstäbige topographische Karten der Nationalpark-Region Hohe Tauern basierend auf OpenData	Großglockner Hochalpenstraßen AG	Karel Kriz		10,000 EUR	2022–2023

## Articles in International Peer-Reviewed Journals

Department staff  
in bold

- Ayanlade A.**, Oluwaranti A., Ayanlade O.S., **Borderon M.**, **Sterly H.**, **Sakdapolrak P.**, Jegede, M.O., Weldemariam, L.F. & Ayinde, A.F.O (2022): Extreme climate events in sub-Saharan Africa: A call for improving agricultural technology transfer to enhance adaptive capacity. – In: *Climate Services* 27, 100311; <https://doi.org/10.1016/j.cliser.2022.100311>
- Ayanlade A.**, Sergi C.M., **Sakdapolrak P.**, Ayanlade O.S., Carlo P.D., Babatimehin O.I., **Weldemariam L.F.**, & Jegede M.O. (2022): Climate change engenders a better Early Warning System development across Sub-Saharan Africa: The malaria case. – In: *Resources, Environment and Sustainability* 10, 100080; <https://doi.org/10.1016/j.resenv.2022.100080>
- Baumgartinger-Seiringer S.**, Doloreux D., Shearmur R. & **Trippl M.** (2022): When history does not matter? The rise of Quebec's wine industry. – In: *Geoforum* 128, 115–124; <https://doi.org/10.1016/J.GEOFORUM.2021.12.013>
- Baumgartinger-Seiringer S.**, Fünfschilling L., Miörner J. & **Trippl M.** (2022): Reconsidering regional structural conditions for industrial renewal. – In: *Regional Studies* 56/4, 579–591; <https://doi.org/10.1080/00343404.2021.1984419>
- Benner M.** (2022): A tale of sky and desert: Translation and imaginaries in transnational windows of institutional opportunity'n – In: *Geoforum* 128, 181–191; <https://doi.org/10.1016/j.geoforum.2021.12.019>
- Benner M.** (2022): An institutionalist perspective on smart specialization: Towards a political economy of regional innovation policy. – In: *Science and Public Policy*, 1-12; <https://doi.org/10.1093/scipol/scac035>
- Benner M.** (2022): Revisiting path-as-process: agency in a discontinuity-development model. – In: *European Planning Studies*; <https://doi.org/10.1080/09654313.2022.2061309>
- Benner M.** (2022): Retheorizing industrial-institutional coevolution: a multidimensional perspective'. – In *Regional Studies* 56/9, 1524–1537; <https://doi.org/10.1080/00343404.2021.1949441>
- Borsci S., Lehtola VV., Nex F., Yang M.Y., Augustijn E-W., Bagheriye L., Brune C., **Kounadi O.**, Li J., Moreira J., Nagel J.V.D., Veldkamp B., Le D.V., Wang M., Wijnhoven F., Wolterink J.M. & Zurita-Milla R. (2022): Embedding artificial intelligence in society: looking beyond the EU AI master plan using the culture cycle. – In: *AI & Society: Knowledge, Culture and Communication*; <https://doi.org/10.1007/s00146-021-01383-x>
- Bridge G. & **Faigen E.** (2022): Towards the lithium-ion battery production network: Thinking beyond mineral supply chains. – In: *Energy Research & Social Science* 89, 102659; <https://doi.org/10.1016/j.erss.2022.102659>
- Buczko U., Jurasinski G., **Glatzel S.** & Karstens S. (2022): Blue Carbon in Coastal Phragmites Wetlands Along the Southern Baltic Sea. – In: *Estuaries and Coasts* 45/7, 2274–2282; <https://doi.org/10.1007/s12237-022-01085-7>
- Cai L., **Janowicz K.**, Zhu R., Mai G., Yan B. & Wang Z. (2022): HyperQuaternionE: A hyperbolic embedding model for qualitative spatial and temporal reasoning. – In: *Geoinformatica*; <https://doi.org/10.1007/s10707-022-00469-y>
- Dickey A., Kosovac A., **Fastenrath S.**, Acuto M. & Gleeson B. (2022): Fragmentation and urban knowledge: An analysis of urban knowledge exchange institutions'. – In: *Cities* 131, 103917; <https://doi.org/10.1016/j.cities.2022.103917>
- Edlinger H.** & Fridrich C. (2022): Neue Unterrichtsfilme „Wirtschaft begreifen und nachhaltig gestalten“ für die Sekundarstufe I. – In: *GW-Unterricht* 167, 48–49.
- Fastenrath S.** (2022): Planen für die Zeit nach der Braunkohle - Transformative Regionalentwicklung in Australien. – In: *Geographische Rundschau (GR)* 74, 54–55.
- Flores Orozco A. Steiner M., Katona T., Roser N., Moser C., **Stumvoll M.J.** & **Glade T.** (2022): Application of induced polarization imaging across different scales to understand surface and groundwater flow at the Hofermuehle landslide. – In: *CATENA* 219, 106612; <https://doi.org/10.1016/j.catena.2022.106612>
- Franz Y.** & **Gruber E.** (2022): The Changing Role of Student Housing as Social Infrastructure. – In: *Urban planning* 7/4, 1–13; <https://doi.org/10.17645/up.v7i4.5661>

- Giustolisi A., Benner M. & Tripl M.** (2022): Smart specialisation strategies: towards an outward-looking approach. – In: European Planning Studies; <https://doi.org/10.1080/09654313.2022.2068950>
- Glina B., Mendyk Ł., Piernik A., Nowak M., **Maier A.**, Inselsbacher E. & **Glatzel S.** (2022): Local weather conditions determine DOC production and losses from agricultural fen soils affected by open-pit lignite mining. – In: CATENA 211, 106012; <https://doi.org/10.1016/j.catena.2021.106012>
- Gong H., Binz C., Hassink R. & **Tripl M.** (2022): Emerging industries: institutions, legitimacy and system-level agency. – In: Regional Studies 56/4, 523–535; <https://doi.org/10.1080/00343404.2022.2033199>
- Guinand S.** (2022): Après la régénération. Retour sur une figure urbaine : les festival marketplaces'. – In: Annales de géographie 6/748, 5–28; <https://doi.org/10.3917/ag.748.0005>
- Haase A., Allsopp H., Arroyo I., **Franz Y.**, Laksevis K., Lazarenko V., Nasya B., Raubisko I., Reeger U., Saadeh B., Schmidt A. & Stevens U. (2022): Refugee migration from Ukraine to other parts of Europe: Challenges to the housing-integration intersection at the city level. – In: Radical Housing Journal 4.2, 211–216.
- Hassink R., **Tripl M.**, Breznitz S., Coenen L., Fitjar R.D., Gong H., He C. & Zook M. (2022): Progress in Economic Geography: Inaugural Editorial. – In: Progress in Economic Geography 2023/01, 100001; <https://doi.org/10.1016/j.peg.2022.100001>
- Humer A.** (2022): Conceptual Freedom in Planning Education and Students' Methodological Learning. – In: Planning Practice & Research 37/4, 412–426; <https://doi.org/10.1080/02697459.2020.1758429>
- Humer A.**, Cardoso R. & Meijers E. (2022): Breaking with the spatial-cycle model: the shift towards 'syncurbanization' in polycentric urban regions. – In: Regional Studies 56/1, 21–35; <https://doi.org/10.1080/00343404.2021.1969008>
- Isaksen A., **Tripl M.** & Mayer H. (2022): Regional innovation systems in an era of grand societal challenges: reorientation versus transformation. – In: European Planning Studies 30/11, 2125–2138; <https://doi.org/10.1080/09654313.2022.2084226>
- Janowicz K.**, Hitzler P., Li W., Rehberger D., Schildhauer M., Zhu R., Shimizu C., Fisher C.K., Cai L., Mai G., Zalewski J., Zhou L., Stephen S., Gonzalez Estrecha S., Mecum B., Lopez-Carr A., Schroeder A., Smith D., Wright D., Wang S., Tian Y., **Liu Z.**, **Shi M.**, D'Onofrio A., Gu Z. & Currier K. (2022): Know, Know Where, KnowWhereGraph: A densely connected, cross-domain knowledge graph and geo-enrichment service stack for applications in environmental intelligence. – In: AI Magazine 43/1, 30–39; <https://doi.org/10.1002/aaai.12043>
- Janowicz K.**, Sieber R. & Crampton J. (2022): GeoAI, counter-AI, and human geography: A conversation: Dialogues in Human Geography Conversation between Renée Sieber and Krzysztof Janowicz, hosted by Jeremy Crampton, July 2022. – In: Dialogues in Human Geography 12/3, 446–458; <https://doi.org/10.1177/20438206221132510>
- Kaucic J.** & Sohn C. (2022): Mapping the cross-border cooperation 'galaxy': an exploration of scalar arrangements in Europe. – In: European Planning Studies 30/12, 2373–2393; <https://doi.org/10.1080/09654313.2021.1923667>
- Lehmann T., **Benner M.** & Kapo A. (2022): Institutional asymmetries in a low-coordination economy: the smart specialization paradox in Bosnia and Herzegovina. – In: Innovation – The European Journal of Social Science Research; <https://doi.org/10.1080/13511610.2022.2092075>
- Lima P.**, **Steger S.**, **Glade T.** & Murillo-García F.G. (2022): Literature review and bibliometric analysis on data-driven assessment of landslide susceptibility. – In: Journal of Mountain Science 19/6, 1670–1698; <https://doi.org/10.1007/s11629-021-7254-9>
- Liu X., **Kounadi O.** & Zurita-Milla R. (2022): Incorporating Spatial Autocorrelation in Machine Learning Models Using Spatial Lag and Eigenvector Spatial Filtering Features. – In: ISPRS International Journal of Geo-Information 11/4, 242; <https://doi.org/10.3390/ijgi11040242>
- Mai G., Hu Y., Gao S., Cai L., Martins B., Scholz J., Gao J. & **Janowicz K.** (2022): Symbolic and subsymbolic GeoAI: Geospatial knowledge graphs and spatially explicit machine learning. – In: Transactions in GIS 26/ 8, 3118–3124; <https://doi.org/10.1111/tgis.13012>
- Mai G., Jiang C., Sun W., Zhu R., Xuan Y., Cai L., **Janowicz K.**, Ermon S. & Lao N. (2022): Towards general-purpose representation learning of polygonal geometries. – In: Geoinformatica; <https://doi.org/10.1007/s10707-022-00481-2>
- Mamatkulov Z., Abdivaitov K., **Hennig S.** & Safarov E. (2022): Land suitability assessment for cotton cultivation - A case study of Kumkurgan District, Uzbekistan. – In: International Journal of Geoinformatics 18/1, 71–80; <https://doi.org/10.52939/ijg.v18i1.2111>

- Marr P.**, Winkler S., Dahl S.O. & Löffler J. (2022): Age, origin and palaeoclimatic implications of peri- and paraglacial boulder-dominated landforms in Rondane, South Norway. – In: *Geomorphology* 408, 108251; <https://doi.org/10.1016/j.geomorph.2022.108251>
- Müller R.**, **Maier A.**, Inselsbacher E., **Peticzka R.**, Wang G. & **Glatzel S.** (2022): 13C-Labeled Artificial Root Exudates Are Immediately Respired in a Peat Mesocosm Study. – In: *Diversity* 14/9, 735; <https://doi.org/10.3390/d14090735>
- Ohler L.M., Seeleitner S., **Haselberger S.**, **Kraushaar S.**, Otto J.-C., Mitter B. & Junker R. (2022): Manipulation of phyllosphere bacterial communities reversibly alters the plant microbiome and leaf traits in the field. – In: *Alpine Botany* 132/2, 301–314; <https://doi.org/10.1007/s00035-021-00273-8>
- Raithofer D.**, **Pichler H.** & **Hintermann C.** (2022): Ich in meiner Medienwelt – Schulpraktische Zugänge zur Verdeutlichung der Rolle sozialer Medien bei der Aushandlung von Identität(en). – In: *GW-Unterricht* 166, 42–61; [https://austriaca.at/0xc1aa5576\\_0x003d-8bab.pdf](https://austriaca.at/0xc1aa5576_0x003d-8bab.pdf)
- Reiner C. & **Benner M.** (2022): Cooperation bias in regional policy: is competition neglected?. – In: *Annals of Regional Science* 69/1, 187–221; <https://doi.org/10.1007/s00168-022-01114-0>
- Sakdapolrak P.**, **Pagogna R.** & **Diniega R.** (2022): Covid-19, Migration und Translokalisierung. – In: *Geographische Rundschau (GR)* 74/5, 14–17.
- Schnelzer J., **Franz Y.**, Mocca E. & Kazepov Y. (2022): The role of institutional opportunity structures for refugee integration in Vienna. Learnings and modifications in the aftermath of the long summer of migration in 2015. – In: *Innovation: The European Journal of Social Science Research*; <https://doi.org/10.1080/13511610.2022.2071239>
- Tödtling F., **Trippl M.** & **Desch V.M.** (2022): New directions for RIS studies and policies in the face of grand societal challenges. – In: *European Planning Studies*, 30/11, 2139–2156; <https://doi.org/10.1080/09654313.2021.1951177>
- Tolentino P.L., **Perez J.E.**, Guardian E., Boothroyd R., Hoey T., Williams R., Fryirs K., Brierley G. & David C.P. (2022): River Styles and stream power analysis reveal the diversity of fluvial morphology in a Philippine tropical catchment. – In: *Geoscience Letters* 9/6; <https://doi.org/10.1186/s40562-022-00211-4>
- Wang X., Wang M., Liu X., **Glade T.**, Chen M., Xie Y., Yuan H. & Chen Y. (2022): Rainfall observation using surveillance audio. – In: *Applied Acoustics* 186, 108478; <https://doi.org/10.1016/j.apacoust.2021.108478>
- Wang X., Wang M., Liu X., Zhu L., **Glade T.**, Chen M., Zhao W. & Xie Y. (2022): A novel quality control model of rainfall estimation with videos - A survey based on multi-surveillance cameras. – In: *Journal of Hydrology* 605, 127312; <https://doi.org/10.1016/j.jhydrol.2021.127312>
- Weber T.K.D., Fiedler J., Fuß R., **Glatzel S.**, Huth V., Jordan S., Jurasinski G., Kutzbach L., Schäfer K., Weymann D., Hagemann U. & Maier M. (2022): Introduction of a guideline for measurements of greenhouse gas fluxes from soils using non-steady-state chambers. – In: *Journal of Plant Nutrition and Soil Science* 185/4, 447–461; <https://doi.org/10.1002/jpln.202200199>
- Weldemariam L.F.**, **Sakdapolrak P.** & **Ayanlade A.** (2022): The impact of migration on food security in Tigray, Northern Ethiopia: The role of migration patterns and remittances. – In: *Erdkunde: Archiv für wissenschaftliche Geographie* 76/4, 271–288; <https://doi.org/10.3112/erdkunde.2022.04.03>
- Yuan H., Wang G., Huang D., **Glatzel S.**, Zhuang J. & Jia H. (2022): Impacts of increasing maize stalk retention amount on soil respiration and temperature sensitivity. – In: *International Journal of Agricultural and Biological Engineering* 15/2, 135–141; <https://doi.org/10.25165/j.ijabe.20221502.6411>
- Zander K., Garnett S., **Sterly H.**, Ayeb-Karlsson S., Šedová B., Lotze-Campen H., Richerzhagen C. & Baggen H. (2022): Topic modeling exposes disciplinary divergence in research on the nexus between human mobility and the environment. – In: *Humanities and Social Sciences Communications* 9, 34; <https://doi.org/10.1057/s41599-022-01038-2>
- Zhu R., **Janowicz K.**, Cai L. & Mai G. (2022): Reasoning over higher-order qualitative spatial relations via spatially explicit neural networks. – In: *International Journal of Geographical Information Science* 36/11, 2194–2225; <https://doi.org/10.1080/13658816.2022.2092115>



## Books

- Eibler M., Ortner S., **Pöpl R.** & Steinbauer A. (2022): GEOGRAFISCH 6 (Geografie und Wirtschaftskunde für die AHS). Veritas.
- Franz Y. & Heintel M.** (eds.) (2022): Kooperative Stadt- und Regionalentwicklung. UTB.
- Franz Y. & Strüver A.** (eds.) (2022): Stadtgeographie: Aktuelle Themen und Ansätze. 1. Aufl., Springer Spektrum.
- Guinand S.** (2022): Festival marketplaces, entre postérités et discontinuités. Après la régénération urbaine. – In: folio Editions.
- Guinand S.,** Gravari-Barbas M. & Aurélie C. (2022): Tourism Dynamics in Everyday Places: Before and After Tourism. Contemporary geographies of leisure, tourism and mobility. Routledge.

## Book Chapters

- Aurélie C., Gravari-Barbas M. & **Guinand S.** (2022): Before and after tourism: how spaces “enter” and “exit” tourism. – In: Condevaux A., Gravari-Barbas M. & **Guinand S.** (eds.): Tourism dynamics in everyday places: Before and after tourism. Routledge (= Contemporary geographies of leisure, tourism and mobility), 8–25.
- Aurélie C., Gravari-Barbas M. & **Guinand S.** (2022): Conclusion. – In: Condevaux A., Gravari-Barbas M. & **Guinand S.** (eds.): Tourism dynamics in everyday places: Before and after tourism. Routledge (= Contemporary geographies of leisure, tourism and mobility), 278–287.
- Ayanlade A.,** Oladimeji A.A., Okegbola O.M., Eludoyin A.O., Eslamian S., Ayinde A.F.O & Perkins P.E. (2022): Effect of Climate Change on Water Availability and Quality: An Assessment of Socio-Resilience in Nigeria. – In: Disaster Risk Reduction for Resilience. Springer, 245–262; [https://doi.org/10.1007/978-3-030-99063-3\\_11](https://doi.org/10.1007/978-3-030-99063-3_11)
- Baumfeld L. & **Heintel M.** (2022): Die Zivilgesellschaft – ein „unruhiger“ Akteur! – In: Fritz J. & Tomaschek N. (eds.): Transformationsgesellschaft. Visionen und Strategien für den sozialökologischen Wandel. Waxmann Verlag (= University – Society – Industry: Beiträge zum lebensbegleitenden Lernen und Wissenstransfer 11), 125–143.
- Borderon M.,** Ludwig A. & Brazeau S. (2022): Vulnerable Populations. – In: Earth Observation, Public Health and One Health Activities, Challenges and Opportunities. CABI Publishing, 66–77; <https://doi.org/10.1079/9781800621183.0000>
- Brazeau S., Vignolles C., Krishnamurthy R.S., Trtanj J., Haynes J., Ramage S., Catry T., Kotchi S.O., **Borderon M.,** Gill M., Ogden N.H., Ludwig A., Aube G., Semenza J.C., Trinanes J. & Davignon D. (2022): Needs, Challenges, and Opportunities: A Review by Experts. – In: Earth Observation, Public Health and One Health: Activities, Challenges and Opportunities. CABI Publishing, 93–103; <https://doi.org/https://www.cabidigitallibrary.org/doi/epdf/10.1079/9781800621183.0003>
- Breier M., **Kriz K. & Pucher A.** (2022): Beyond East and West: A Framework for Researching and Communicating Historical Landscapes. – In: Abstracts of the International Cartographic Association 29 /5; <https://doi.org/10.5194/ica-abs-5-29-2022>
- Butsch C. & **Sakdapolrak P.** (2022): Gesundheit und Krankheit im Entwicklungskontext. – In: Geographien der Gesundheit: Beiträge zum 50-jährigen Bestehen des Arbeitskreises Medizinische Geographie und Geographische Gesundheitsforschung in der DGfG. 6, Geographische Gesundheitsforschung, 85–98.
- Fastenrath S.** (2022): Why we need more challenge-oriented innovation. – In: Fritz J. & Tomaschek N. (eds.): Transformationsgesellschaft : Visionen und Strategien für den sozialökologischen Wandel. Waxmann Verlag (= University – Society – Industry: Beiträge zum lebensbegleitenden Lernen und Wissenstransfer 11), 59–70.



Fischer M. & **Heintel M.** (2022): Framing und Reframing in der Stadt- und Regionalentwicklung. – In: Franz Y. & Heintel M. (eds.), Kooperative Stadt- und Regionalentwicklung, UTB, 201–221.

**Franz Y. & Heintel M.** (2022): Kooperative Stadt- und Regionalentwicklung – eine Einleitung. – In: **Franz Y. & Heintel M.** (eds.): Kooperative Stadt- und Regionalentwicklung. UTB, 15–22.

**Franz Y., Heintel M. & Weiser C.** (2022): Vorwort der Herausgeber\*innen. – In: **Franz Y. & Heintel M.** (eds.): Kooperative Stadt- und Regionalentwicklung. UTB, 9–13.

**Franz Y.** (2022): Ordinary Invitations in Spaces of Everyday Life: Arriving in Neighborhood Life through Analogue Platforms. – In: Strüver A. & Bauriedl S. (eds.): Platformization of Urban Life: Towards a Technocapitalist Transformation of European Cities. Transcript Verlag, 217–236.

Gaspar Y. & **Heintel M.** (2022): Partizipative Governance in der Stadtentwicklung eine Aufbereitung der Partizipationsforschung von Arnsteins Leiter bis heute. – In: Fritz J. & Tomaschek N. (eds.): Transformationsgesellschaft : Visionen und Strategien für den sozialökologischen Wandel. Waxmann Verlag (= University – Society – Industry: Beiträge zum lebensbegleitenden Lernen und Wissenstransfer 11), 215–235.

**Heintel M.** (2022): Was hat Regionalentwicklung mit Framing zu tun? Neue Geschichten braucht das Land! – In: Langner S. & Weiland M. (eds.): Die Zukunft auf dem Land? Imagination, Projektion, Planung, Gestaltung. Transcript (= Rurale Topografien 14), 197–210.

Hohensinner S. & **Pöppl R.** (2022): The Danube Floodplain National Park: A Fluvial Landscape with Expiration Date? – In: Embleton-Hamann C. (ed.): Landscapes and landforms of Austria. Springer, 193–206. [https://doi.org/10.1007/978-3-030-92815-5\\_12](https://doi.org/10.1007/978-3-030-92815-5_12)

**Humer A.** (2022): Dienste und Infrastrukturen der Daseinsvorsorge im europäischen Kontext. – In: Neu C. (ed.): Handbuch Daseinsvorsorge: Ein Überblick aus Forschung und Praxis. VKU Verlag, Berlin, 26–35.

Kovacs N. & **Weixlbaumer N.** (2022): Partizipation in der Gebietsschutzpolitik. Partnerbetriebliche Strukturen im UNESCO-Biosphärenpark Wienerwald als Beitrag zu einer kooperativen Stadt- und Regionalentwicklung. – In: **Franz Y. & Heintel M.** (eds.), Kooperative Stadt- und Regionalentwicklung, UTB, 368–388.

**Liu Z.**, Gu Z., Thelen T., Gonzalez Estrecha S., Zhu R., Fisher C.K., D’Onofrio A., Shimizu C., **Janowicz K.**, Schildhauer M., Stephen S., Rehberger D., Li W. & Hitzler P. (2022): Knowledge explorer: exploring the 12-billion-statement KnowWhereGraph using faceted search (demo paper). – In: Renz M., Sarwat M., Nascimento M.A., Shekhar S. & Xie X. (eds.): 30<sup>th</sup> ACM SIGSPATIAL International Conference on Advances in Geographic Information Systems, ACM SIGSPATIAL GIS 2022, 73. <https://doi.org/10.1145/3557915.3561009>

**Liu Z., Shi M., Janowicz K.**, Regalia B., Delbecque S., Mai G., Zhu R. & Hitzler P. (2022): LD Connect: A Linked Data Portal for IOS Press Scientometrics. – In: Groth P. et al. (eds.): The Semantic Web. ESWC 2022. Springer (= Lecture Notes in Computer Science 13261), 323–337; [https://doi.org/10.1007/978-3-031-06981-9\\_19](https://doi.org/10.1007/978-3-031-06981-9_19)

**Marr P.**, Winkler S. & Löffler J. (2022): Environmental and Socio-Economic Consequences of Recent Mountain Glacier Fluctuations in Norway. – In: Mountain Landscapes in Transition: Effects of Land Use and Climate Change. Springer (= Sustainable Development Goals Series), 289–330. [https://doi.org/10.1007/978-3-030-70238-0\\_10](https://doi.org/10.1007/978-3-030-70238-0_10)

**Pöppl R.**, Roetzel R. & Riedl D. (2022): Deeply Incised Valley Meanders of the Bohemian Massif. – In: Embleton-Hamann C. (ed.): Landscapes and landforms of Austria. Springer (= World Geomorphological Landscapes), 147–161. [https://doi.org/10.1007/978-3-030-92815-5\\_9](https://doi.org/10.1007/978-3-030-92815-5_9)

Riedl D., Roetzel R., **Pöppl R.** & Sprafke T. (2022): Wachau World Heritage site: A Diverse Riverine Landscape. – In: Embleton-Hamann C. (ed.): Landscapes and landforms of Austria. Springer (= World Geomorphological Landscapes), 163–178. [https://doi.org/10.1007/978-3-030-92815-5\\_10](https://doi.org/10.1007/978-3-030-92815-5_10)

**Schorn M.** (2022): Jugendabwanderung in ländlichen Räumen kooperativ begegnen. – In: Franz Y. & Heintel M. (eds.), Kooperative Stadt- und Regionalentwicklung. UTB - Facultas, 303–317.

**Sterly H.** & Wirkus L. (2022): Analysing refugees' secondary mobility using mobile phone Call Detail Records (CDR). – In: Salah A.A., Korkmaz E.E. & Bircan T. (eds.): Data Science for Migration and Mobility. Oxford University Press (= Proceedings of the British Academy 251), 99–120.

Tanneberger F., Larmola T., Sirin A., Arias-Navarro C., Farrell C., **Glatzel S.**, Kozulin A., Laerke P-E., Leifeld J., Mäkipää R., Minayeva T., Moen A., Oskarsson H., Pakalne M. & Sendžikaitė J. (2022): Regional Assessment for Europe. – In: Global Peatlands Assessment: The State of the World's Peatlands: Evidence for action toward the conservation, restoration, and sustainable management of peatlands. United Nations Environment Programme, 123–154; <https://www.unep.org/resources/global-peatlands-assessment-2022>

Trisos C.H., Adelekan I.O., Totin E., **Ayanlade A.**, Efitre J., Gemed A., Kalaba K., Lennard C., Masao C., Mgaya Y., Ngaruyia G., Olago D., Simpson N.P. & Zakieldeen S. (2022): Africa. In: Pörtner H.O., Roberts D.C., Tignor M., Poloczanska E.S., Mintenbeck K., Alegría A., Craig M., Langsdorf S., Löschke S., Möller V., Okem A., Rama B.(eds.): Climate Change 2022: Impacts, Adaptation, and Vulnerability. Working Group II Contribution to the Sixth Assessment Report of the Intergovernmental Panel on Climate Change. Cambridge University Press, 1285–1455. [https://www.ipcc.ch/report/ar6/wg2/downloads/report/IPCC\\_AR6\\_WGII\\_Chapter09.pdf](https://www.ipcc.ch/report/ar6/wg2/downloads/report/IPCC_AR6_WGII_Chapter09.pdf)

Wantzen K.M., Beer F., Jungkunst H.F. & **Glatzel S.** (2022): Carbon Dynamics in Wetlands. – In: Encyclopedia of inland waters, Elsevier, 169–181. <https://doi.org/10.1016/B978-0-12-819166-8.00051-7>

**Wieser D., Pucher A. & Kriz K.** (2022): The infobox as an elementary component of map-centred online applications: Principle, functionality and implementation using the example of AustrianVineyards.com. – In: Abstracts of the ICA 5, 162; <https://doi.org/10.5194/ica-abs-5-162-2022>

## Working Papers | Conference Papers | Other Contributions

Cai L., **Janowicz K.** & Zhu R. (2022): Automatically Discovering Conceptual Neighborhoods Using Machine Learning Methods. In: DROPS Dagstuhl Research Online Publication Server; <https://doi.org/10.4230/LIPICs.COSIT.2022.3>

Ding Y., Sheth A., **Janowicz K.**, Baranzini S., Israni S., Altintas I., Yeghiazarian L., Young E. & Klein S. (2022): International Workshop on Knowledge Graphs: Open Knowledge Network. – In: KDD '22: Proceedings of the 28<sup>th</sup> ACM SIGKDD Conference on Knowledge Discovery and Data Mining. New York, NY: Association for Computing Machinery (ACM), 4864–4865; <https://doi.org/10.1145/3534678.3542899>

**Franz Y.** & **Heintel M.** (2022): Was macht die „Kooperative Stadt- und Regionalentwicklung“ kooperativ? – In: Standort – Zeitschrift für Angewandte Geographie 46/4, 39–41. <https://doi.org/10.1007/s00548-022-00761-x>

Goodchild M., Appelbaum R., Crampton J., Herbert W., **Janowicz K.**, Kwan M.-P., Michael K., Alvarez León L., Bennett M., Cole D., Currier K., Fast V., Hirsch J., Kattenbeck M., Kedron P., Kerski J., **Liu Z.**, Nelson T., Shulruff T., Sieber R., Wertman J., Wilmott C., Zhao B., Zhu R., Nilupaer J., Dony C. & Langham G. (2022): A white paper on locational information and the public interest. AAG Organizing Committee on Locational Information and the Public Interest; <https://doi.org/10.14433/2017.0113>

Greinke L., **Franz Y.**, **Humer A.**, Kazepov Y.A.K. & Danielczyk R. (2022): Exploring urban and regional infrastructure from a spatial perspective. – In: European Journal of Spatial Development 19/4, 99–104. <https://doi.org/10.5281/zenodo.7256948>

**Guinand S.**, Llubani A., Bauer S., Bytyqi E., Schwab E. & Nabolli E. (2022): Nachhaltige Stadtentwicklung an der urbanen Peripherie: Mit Qualifizierung von Freiräumen dem Nutzungsdruck begegnen. – In: Stadt + Grün 1, 20–25.

**Janowicz K.**, Zhu R., Verstegen J., McKenzie G., Martins B. & Cai L. (2022): Six GIScience Ideas That Must Die. – In: AGILE: GIScience series 3/7; <https://doi.org/10.5194/agile-giss-3-7-2022>, 2022

**Liu Z.**, **Janowicz K.**, Cai L., Zhu R., Mai G. & **Shi M.** (2022): Geoparsing: Solved or Biased? An Evaluation of Geographic Biases in Geoparsing. – In: AGILE: GIScience series 3/9; <https://doi.org/10.5194/agile-giss-3-9-2022>

Triches N.Y., Gillespie L.M., Abalos D., Finke P., Zechmeister-Boltenstern S., **Glatzel S.** & Diaz-Pines E (2022): Inclination controls CO<sub>2</sub> and N<sub>2</sub>O fluxes, but not CH<sub>4</sub> uptake, from a temperate upland forest soil. – In: Research Square; <https://doi.org/10.21203/rs.3.rs-1803105/v1>

**Trippl M.**, **Fastenrath S.** & Isaksen A. (2022): Rethinking regional economic resilience: Preconditions and processes shaping transformative resilience. [https://www.geist-wp.com/papers/geist\\_wp\\_2202.pdf](https://www.geist-wp.com/papers/geist_wp_2202.pdf)

Zhu R., **Janowicz K.**, Mai G., Cai L. & **Shi M.** (2022): COVID-Forecast-Graph: An Open Knowledge Graph for Consolidating COVID-19 Forecasts and Economic Indicators via Place and Time. – In: AGILE: GIScience series 3/21; <https://doi.org/10.5194/agile-giss-3-21-2022>

# Citations

retrieved  
February 2022

Scientist	Position	Google Scholar	Scopus	Web of Science
Elisabeth AUFHAUSER	Assistant Professor	352	56	35
Ayansina AYANLADE	University Assistant Post-Doc	2313	617	491
Simon BAUMGARTINGER-SEIRINGER	Project Assistant Post-Doc	268	143	133
Pamela BAUR	University Assistant Prae-Doc	–	–	1
Maximilian BENNER	Senior Scientist	732	196	191
Kyle BOODOO	Project Assistant Post-Doc	113	87	65
Marion BORDERON	Senior Scientist	305	123	102
Markus BREIER	Project Assistant	–	8	–
Simon BUNCHUAY-PETH	University Assistant Post-Doc	206	75	65
Camila Aguetoni CAMBUI	Project Assistant Post-Doc	–	303	312
Edoardo CARRARO	University Assistant Prae-Doc	–	2	–
Erika FAIGEN	Project Assistant Post-Doc	440	–	2
Sebastian FASTENRATH	University Assistant Post-Doc	288	165	4
Yvonne FRANZ	University Assistant Post-Doc	322	68	19
Alessio GIUSTOLISI	University Assistant Prae-Doc	5	–	2
Thomas GLADE	Professor	10567	5542	3823
Stephan GLATZEL	Professor	2975	1900	1679
Peter GÖRGL	University Assistant Post-Doc	101	–	9
Elisabeth GRUBER	Project Assistant Post-Doc	106	35	–
Gudrun HAINDLMAIER	Senior Lecturer	1465	135	141
Stefan HASELBERGER	Project Assistant Prae-Doc	65	39	30
Gerhard HATZ	Assistant Professor	316	64	58
Martin HEINTEL	Associate Professor	502	17	30
Sabine HENNIG	Professor	440	76	33
Christiane HINTERMANN	Associate Professor	539	24	7
Franz HOLAWÉ	Assistant Professor	–	421	363
Alois HUMER	Professor	569	200	133
Krzysztof JANOWICZ	Professor	10878	5746	3730
Nasreen JEELANI	Project Assistant Post-Doc	–	320	284
Jiannis KAUCIC	Project Assistant Prae-Doc	64	4	4
Ourania KOUNADI	Assistant Professor (Tenure Track)	581	282	329
Sabine KRAUSHAAR	University Assistant Post-Doc	150	102	78
Kerstin KRELLENBERG	Professor	1819	758	679
Nele KRESS	University Assistant Prae-Doc	–	–	22
Karel KRIZ	Assistant Professor	289	34	–
Christine KROISLEITNER	Project Assistant Prae-Doc	–	295	302

Scientist	Position	Google Scholar	Scopus	Web of Science
Pedro Henrique Muniz LIMA	Project Assistant Prae-Doc	678	29	29
Zilong LIU	University Assistant Prae-Doc	20	9	–
Andreas MAIER	Senior Scientist	–	32	–
Philipp MARR	Senior Scientist	72	43	39
Raphael MÜLLER	University Assistant Prae-Doc	–	2	2
Balázs PÁGER	Project Assistant Post-Doc	394	133	67
Raffaella PAGOGNA	Project Assistant Prae-Doc	119	60	54
John Edward PEREZ	Project Assistant Prae-Doc	–	2	–
Robert PETICZKA	Assistant Professor	618	330	310
Herbert PICHLER	Bundeslehrer im Hochschuldienst	169	–	–
Ronald PÖPPL	Senior Lecturer	1027	800	677
Alexander PUCHER	Project Assistant Post-Doc	–	36	–
Daniel RATHOFER	University Assistant Prae-Doc	15	–	–
Andreas RIEDL	Assistant Professor	298	39	8
Patrick SAKDAPOLRAK	Professor	3358	1287	1052
Martina SCHORN	Project Assistant Post-Doc	12	–	–
Meilin SHI	University Assistant Prae-Doc	56	27	–
Gunnar STANGE	University Assistant Post-Doc	135	17	3
Harald STERLY	Senior Scientist	997	459	7
Reena TADEE	Phd Student	47	15	13
Michaela TRIPPL	Professor	12232	4866	3816
Jane WALK	University Assistant Post-Doc	83	64	50
Norbert WEIXLBAUMER	Associate Professor	715	114	17

## Awards

Award Winner	Award
Stephan GLATZEL	Member of the Ramsar Scientific and Technical Review Panel (Regional Expert for Europe)
ENGAGE	BNE Award (Education for Sustainable Development), 3 <sup>rd</sup> place Klimawandel MOOC (KliMO)

## Guests at our Department

in alphabetical  
order

### Visiting Professors

Guest	Affiliation	Period	Working Group
Itta BAUER	Department of Geography, University of Zurich UZH	2022S	Subject Didactics of Geography and Economic Education
Sabine HENNIG	Department of Geoinformatics, University of Salzburg	2021W	Cartography and Geographic Information
Anna KAJOSAARI	Aalto University Finland	2022W	Spatial Research and Spatial Planning
Eva PURKARTHOFER	Aalto University, Helsinki	2021W	Spatial Research and Spatial Planning

### Visiting Researchers

Guest	Affiliation	Period	Working Group
Ingrid BOAS	Environmental Policy Group of Wageningen University (Faculty of Social Sciences)	2022S	Population Geography and Demography
Dorota CELINSKA-JANOWICZ	Centre for European Regional and Local Studies (EUROREG), University of Warsaw	2021W, 2022S	Spatial Research and Spatial Planning
Kitty CURRIER	University of California, Santa Barbara	2022W	Cartography and Geographic Information
Céline JANSSEN	TU Delft, NL (Research Platform The Challenge of Urban Futures)	2022S	Spatial Research and Spatial Planning
Robin KHALFA	Universität Gent	2022W	Digital Geography
Britta KLAGGE	Universität Bonn	2022S	Population Geography and Demography
Sarah KLOSTERKAMP	Universität Bonn	2022W	Urban Studies
Koko WARNER	United Nations – Climate Change Secretariat	2022S	Population Geography and Demography
Nina WIEDERMANN	Eidgenössische Technische Hochschule Zürich	2022W	Digital Geography
Apoline ZAHORKA	École normale supérieure & Département de Géosciences, Paris	2022S	Geoecology

### Research Fellows (Erasmus+ traineeships at the Department)

Guest	Affiliation	Period	Working Group
Bruno ABATTI	IPH-UFRGS	2022W	Physical Geography
Lilly BUCHER	University of Vienna	2022S	Physical Geography
Zemin GAO	China University of Geosciences	2022W	Physical Geography
Ante IVCEVIC	Vrije Universiteit Brussel	2022S, 2022W	Physical Geography
Katrin JOSY	University of Mainz	2022S	Physical Geography
Ebrahim MOGHIMI	Department of Natural Geography, University of Teheran, Iran	2022S	Physical Geography

Guest	Affiliation	Period	Working Group
Daniele SPEDALIERE	University “G. D’Annunzio” of Chieti and Pescarafrom	2022S	Physical Geography
Marina REFATTI FAGUNDES	Universidade Federal do Rio Grande do Sul	2022W	Physical Geography
Xing WANG	Nanjing Normal University	2021W, 2022S	Physical Geography
Ding XIA	China University of Geosciences	2022S, 2022W	Physical Geography
Taorui ZENG	China University of Geosciences	2022W	Physical Geography

## External Lecturers

in alphabetical  
order

Lecturer	Teaching Term	Professional Background
Katharina AUER-ZOTLÖTERER	2021W, 2022S	Associate Professor, Department of Marketing and International Business, University of Vienna
Josef BAUM	2021W, 2022S, 2022W	Self-employed economist and geographer
Simon BAUMGARTNER-SEIRINGER	2022W	Project Assistant, Department of Geography and Regional Research, University of Vienna
Julia BECKEL	2022S	Cartographer and project manager, Radlobby-Radtourismus
Felix Magnus BERGMEISTER	2021W, 2022S, 2022W	Lecturer, PH Burgenland
Robert BERTSCH	2021W, 2022W	Consultant, DHI
Wolfgang BLAAS	2021W, 2022S, 2022W	Associate Professor, Department of Public Finance and Infrastructure Policy, TU Wien
Markus BREIER	2021W, 2022W	Project Assistant, Department of Geography and Regional Research, University of Vienna
Elisabeth CHRISTEN	2021W, 2022S	Senior Economist, Österreichisches Institut für Wirtschaftsforschung
Camila Aguetoni CAMBUI	2022S, 2022W	Project Assistant, Department of Geography and Regional Research, University of Vienna
Danielle CARBON	2021W, 2022W	PhD Student, Department of Geography and Regional Research, University of Vienna
Werner DIETL	2022S	Director, BG/BRG Enns (OÖ)
Stefanie DÖRINGER	2021W, 2022S	Researcher, Institute for Urban and Regional Research (ISR), Austrian Academy of Science (ÖAW)
Dominik EBENSTREIT	2022W	Cartographer and spatial planner
Josef EITZINGER	2022S	Deputy Head, Professor, Institute of Meteorology and Climatology, University of Natural Resources and Life Science, Vienna
Luisa FÄRBER	2022S, 2022W	Student Assistant, Department of Geography and Regional Research, University of Vienna
Ernst Michael FELBERBAUER	2021W, 2022S, 2022W	Head, Digital Transformation Processes, Austrian Military University Network
Michael FISCHER	2022S, 2022W	ÖAR GmbH
Christian FRIDRICH	2021W, 2022S, 2022W	Research Coordinator, PH Wien, Author of schoolbooks
Oliver FRITZ	2021W, 2022S, 2022W	Senior Economist, Austrian Institute of Economic Research, Research Field Structural Change and Regional Development
Thomas GASSNER	2021W, 2022W	Head of Development, SynerGIS Informationssysteme GmbH
Ingrid GATTRINGER	2022S	Umweltbundesamt, Wien
Thomas GEIER	2022S	Teacher, GRG 11
Philip GLASNER	2021W, 2022W	SynerGIS GmbH, Wien
Peter Johannes GÖRGL	2022S, 2022W	Self-employed spatial researcher and spatial planner – “Modul5”
Joshua GRIGSBY	2022S	Assistant Program Coordinator at 4Cities Erasmus Mundus Master in Urban Studies
Elisabeth GRUBER	2021W, 2022S, 2022W	Project Assistant, Department of Geography and Regional Research, University of Vienna



Lecturer	Teaching Term	Professional Background
Susanne GRUBER	2022S	Science Teacher, BFI Wien
Sandra GUINAND	2021W, 2022S, 2022W	Fellow, ETH Zürich
Gerhard GÜRTLICH	2021W, 2022S, 2022W	Retired, former Head of Section IV - Transport, Federal Ministry of Transport, Innovation and Technology
Norbert HACKNER	2021W, 2022W	WIGeoGIS GmbH, Wien
Bernhard HASCHEK	2022S	EVN Wasser
Stefan HASELBERGER	2021W, 2022S, 2022W	Project Assistant, Department of Geography and Regional Research, University of Vienna
Klaus HASLINGER	2021W, 2022S	Researcher, ZAMG, Wien
Michaela HAUMER	2022S	Statistician and teaching activities for the OeNB
Wolfgang HENEBICHLER	2021W, 2022W	UVM Systems GmbH, Klosterneuburg
Sabine HENNING	2022S	Department of Geoinformatics, University of Salzburg
Stefan HINSCH	2021W, 2022S, 2022W	Teacher, Abendgymnasium Wien
Hartwig HITZ	2021W, 2022S, 2022W	Teacher, Sportgymnasium Maria Enzersdorf, PH Niederösterreich
Philipp HUBER	2022S	Teacher, BRG 19
Thomas HUBER	2022W	SynerGIS GmbH, Wien
Karl HUSA	2021W, 2022S, 2022W	Associated Professor (retired), Department of Geography and Regional Research, University of Vienna
Martin HUTTER	2022S	Researcher, European Affairs (MA 27), City of Vienna
Anna IGLSEDER	2021W, 2022S, 2022W	University Assistant, Technische Universität Wien
Christian JACHS	2022S	abfallrechtl. GF Zöchling
Markus JAMRITSCH	2022S	Teacher, HLM-HLP Mödling
Stefan JAQUEMAR	2022S	Consulting & Support, SynerGIS Informationssysteme GmbH
Thomas JEKEL	2021W, 2022S, 2022W	Lecturer, Universität Duisburg/Essen, Institut für Geographie
Wolfgang KAINZ	2021W, 2022S, 2022W	Professor (retired), Department of Geography and Regional Research, University of Vienna
Robert KANTA	2021W, 2022W	Technical Assistant, Department of Geography and Regional Research, University of Vienna
Jiannis KAUCIC	2021W	Project Assistant, Department of Geography and Regional Research, University of Vienna
Stefan KERBL	2021W, 2022S, 2022W	Researcher, Financial stability, Oesterreichische Nationalbank
Gernot KLINGER	2022W	Cartographer/GIS-Specialist, Austro Control GmbH, Vienna
Erich KNABL	2022W	Head, Department Production and IT, Ed. Hölzel GmbH Nfg. KG, Vienna
Petra KÖCK	2022S	Stadt Innsbruck, Referat Stadtplanung, Stadtentwicklung und Integration Stadt
Florian KORN	2021W, 2022S	Project Assistant, Department of Geography and Regional Research, University of Vienna
Sabine KRAUSHAAR	2022W	Project Assistant, Department of Geography and Regional Research, University of Vienna
Jürgen KRISTEN	2021W, 2022S, 2022W	Self-employed Programmer, Weiten

Lecturer	Teaching Term	Professional Background
Christine KROISLEITNER	2021W, 2022S	Project Assistant, Department of Geography and Regional Research, University of Vienna
Stefan LAMPRECHTER	2021W, 2022S, 2022W	Teacher, Vienna Business School
Viktoria LAU	2022S, 2022W	Teacher, BHAK Wien 22
Johannes LIEM	2022S, 2022W	Freelance Cartographer, GIS & Web Developer
Johannes LINDNER	2021W, 2022S, 2022W	Teacher, Bhak 13; Lecturer, KPH Wien/Krems
Marie-Luise LOCHMANN	2022S	Student Assistant, Department of Geography and Regional Research, University of Vienna
Nina MARLOVITS	2021W, 2022W	Project Assistant, Department of Geography and Regional Research, University of Vienna, teacher at Bundesgymnasium und Bundesrealgymnasium Franklinstraße 21
Markus MARTERBAUER	2021W, 2022W	Head, Department of Economics and Statistics, AK Wien, Vice-President of the Fiscal Council, Expert in the Budget Committee of the National Council, Member of the Advisory Council for Economic and Social Affairs
Christian MASLO	2022S	Head of the water school Stadt Wien, drinking water expert
Walter MATZNETTER	2021W, 2022S, 2022W	Assistant Professor (retired), Department of Geography and Regional Research, University of Vienna
Harald MESSNER	2022S	Sales Management & Sales Controlling, bank99
Karl MILFORD	2021W, 2022S, 2022W	Associate Professor (retired), Department of Economics, University of Vienna
Roland MITTERMAIER	2021W, 2022S, 2022W	Federal Office of Metrology and Surveying (BEV), Vienna
Markus MÜLLNER	2022S	ibw Austria - Research & Development in VET
Robert MUSIL	2021W, 2022S, 2022W	Deputy Director, Head RG Innovation and Urban Economy, Institute for Urban and Regional Research (ISR), Austrian Academy of Science (ÖAW)
Erich MURSCH-RADLGRUBER	2022S	Associate Professor (retired), Institute of Meteorology and Climatology, University of Natural Resources and Life Science, Vienna
Lukas NEUGEBAUER	2021W, 2022S, 2022W	Project Assistant, Department of Geography and Regional Research, University of Vienna
Birgit ORTNER	2021W, 2022S, 2022W	Master Student Cartography and Geographic Information
Stefan PADBERG	2021W, 2022W	Researcher, Didaktik des Sachunterrichts, Bergische Universität Wuppertal
Bernhard PAMMER	2021W, 2022W	Federal Office of Metrology and Surveying (BEV), Vienna
Susanne PASCHKE	2022W	Südwind
Gerhard PAUL	2022S	Federal Office of Metrology and Surveying (BEV), Vienna
John Edward PEREZ	2021W	Project Assistant, Department of Geography and Regional Research, University of Vienna
Jan PETERS-ANDERS	2022S	Austrian Institute of Technology (AIT - TECHbase Vienna), Vienna
Jasmine PLANITZER	2022S	STRABAG GmbH, Vienna
Christian PÖTL-DIENST	2021W, 2022W	Teacher, GRG23, Chairman of the association "PolEdu - Politics & Education"
Gerlinde PRÖBSTL	2021W, 2022S, 2022W	Lecturer, KPH Wien/Krems
Christian PROCHASKA	2022S	
Alexander PUCHER	2021W, 2022S, 2022W	Project Assistant, Department of Geography and Regional Research, University of Vienna
Stefan RAUSCHA	2021W, 2022S, 2022W	Data Scientist, A1 Telekom Austria AG

Lecturer	Teaching Term	Professional Background
Vanessa REDAK	2021W, 2022W	Deputy Head, Financial Stability and Macroprudential, Oesterreichische Nationalbank
Oliver REHBERGER	2022S	Project Assistant, BOKU
Susanne REIMANN	2021W, 2022S, 2022W	Lecturer, Department of Teacher Education, University of Vienna
Doris RIEDL	2021W, 2022S, 2022W	Teacher, AHS14
Lorenz Edgar RIEGLER	2021W, 2022W	independent Lawyer, AllRight Attorneys in Cooperation, Vienna
Rainer ROCKENBAUER	2021W, 2022W	Support Engineer, VertiGIS Europe
Peter Alexander RUMPOLT	2022S	Institute for Urban and Regional Research (ISR), Austrian Academy of Science (ÖAW)
Veronika SCHAFELLNER	2022S	Support, Schulung, Consulting, SynerGIS Informationssysteme GmbH
Johannes SCHAFFER	2022S, 2022W	MECCA Environmental Consulting, Vienna
Michaela SCHAFFHAUSER-LINZATTI	2021W, 2022S, 2022W	Associate Professor, Deputy Head, Department of Accounting, Innovation and Strategy, University of Vienna
Lisa SCHIPPER	2021W, 2022S	Environmental Social Science Research Fellow, Environmental Change Institute, University of Oxford
Michaela SCHLÖGLMANN	2022S	Geographer and data analyst, UNIQA Insurance
Elmar SCHMALTZ	2021W, 2022S, 2022W	Head, Department Watershed Hydrology and Erosion, Institute for Land and Water Management Research
Stefan SCHNEIDERBAUER	2021W	
Oliver SCHNITZER	2021W, 2022W	Teacher, Bildungszentrum Kenyongasse
Martina SCHORN	2021W, 2022S, 2022W	Project Assistant, Department of Geography and Regional Research, University of Vienna
Selina SCHWAB	2021W, 2022S, 2022W	Master Student Cartography and Geographic Information
Ingrid SCHWARZ	2021W, 2022S, 2022W	Teacher, BG Wiener Neustadt; Lecturer, KPH Wien/Krems
Ulrich SCHWARZ	2021W, 2022S, 2022W	Consultant Engineer for Geography, FLUVIUS Floodplain Ecology and River Basin Management, Vienna
Markus SEIDL	2022S	Researcher, Austrian Conference on Spatial Planning (ÖROK), Vienna
Christian SITTE	2021W, 2022S, 2022W	Lecturer, Teacher (retired); Author of schoolbooks
Markus SPERINGER	2022S	Researcher, Statistics Vienna (MA 23)
Peter SPINDLER	2021W, 2022S, 2022W	Theatre maker, theatre pedagogue, humour expert; Lecturer, MUK Musik und Kunst Privatuniversität der Stadt Wien
Gunnar STANGE	2022W	Humboldt-Universität zu Berlin
Roman STANI-FERTL	2022S	Freelance cartographer and map editor
Gregori STANZER	2021W, 2022S, 2022W	Civil engineer, Owner, AllRegio
Erich STRIESSNIG	2021W	Professor, Deputy Head, Department of Demography, University of Vienna
Ulrike STROISSNIG	2022W	Research Associate, WU Wien, Institute for Multi-Level Governance and Development
Nikolaus STUDNICKA	2022S	TLS Business Division Manager, RIEGL Laser Measurement
Hansjörg UNTERFRAUNER	2022S	Lecturer, Faculty of Education, Free University of Bozen-Bolzano
Thomas URL	2021W, 2022S, 2022W	Senior Economist, Austrian Institute of Economic Research, Research Field Macroeconomics and European Economic Policy

Lecturer	Teaching Term	Professional Background
Johannes Thomas WEIDINGER	2022S	Museum Director, K-Hof Kammerhofmuseum Gmunden
Wolfgang WEIGEL	2021W, 2022S	Associated Professor (retired), Department of Economics, University of Vienna
Dominik WIESER	2021W, 2022S, 2022W	Project Assistant, Department of Geography and Regional Research, University of Vienna
Lukas WILFINGER	2022S	Data Analyst/Scientist, Win2Day
Elisabeth WORLICZEK	2022W	Researcher, Centre for Global Change and Sustainability, University of Natural Resources and Life Science, Vienna
Harald ZANDLER	2022S	Researcher, Faculty of Biology, Chemistry and Earth Sciences Climatology, University of Bayreuth
Ulrich ZANGERL	2022S	Student Assistant, Department of Geography and Regional Research, University of Vienna

